

Product datasheet for **TP308309M**

Syntrophin (SNTB2) (NM_006750) Human Recombinant Protein

Product data:

Product Type:	Recombinant Proteins
Description:	Recombinant protein of human syntrophin, beta 2 (dystrophin-associated protein A1, 59kDa, basic component 2) (SNTB2), 100 µg
Species:	Human
Expression Host:	HEK293T
Expression cDNA Clone or AA Sequence:	>RC208309 representing NM_006750 Red =Cloning site Green =Tags(s)

MRVAAATAAAGAGPAMAVWTRATKAGLVELLRERWVRVVAELSGESLSLTGDAAAAELEPALGPAAAAF
NGLPNGGGAGDSLPGSPSRGLGPPSPAPPGRPAGEAGASPPVRRVRVKQEAGGLGISIKGGRENRMPI
LISKIFPLAADQSRALRLGDAILSVNGTDLRQATHDQAVQALKRAGKEVLLVFKFIREVTPYIKKPSLV
SDLPWEGAAPQSPSFGSEDSGSPKHQNSTKDRKIPLKMCFAARNLSMPDLENRLIELHSPDSRNTLIL
RCKDTATAHSWFVAIHTNIMALLPQVLAELNAMLGATSTAGGSKEVKHIAWLAEQAKLDGGRQQWRPVLM
AVTEKDLLLYDCMPWTRDAWASPCHSYPLVATRLVHSGSGCRSPSLGSDLT FATRTGSRQGIEMHLFRVE
THRDLSSWTRILVQGGCHAAELIKEVSLGCMLNGQEVRLTIHYENGFTISRENGGSSSILYRYPFERLKM
SADDGIRNLYLDFGGPEGELTMDLHSCPKPIVFLHTFLSAKVTRMGLLV

TRTRPLEQKLISEEDLAANDILDYKDDDDKV

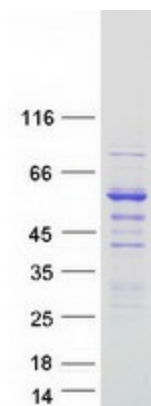
Tag:	C-Myc/DDK
Predicted MW:	57.8 kDa
Concentration:	>0.05 µg/µL as determined by microplate BCA method
Purity:	> 80% as determined by SDS-PAGE and Coomassie blue staining
Buffer:	25 mM Tris-HCl, 100 mM glycine, pH 7.3, 10% glycerol
Preparation:	Recombinant protein was captured through anti-DDK affinity column followed by conventional chromatography steps.
Note:	For testing in cell culture applications, please filter before use. Note that you may experience some loss of protein during the filtration process.
Storage:	Store at -80°C.



[View online »](#)

Stability:	Stable for 12 months from the date of receipt of the product under proper storage and handling conditions. Avoid repeated freeze-thaw cycles.
RefSeq:	NP_006741
Locus ID:	6645
UniProt ID:	Q13425 , A0A024R732
RefSeq Size:	9771
Cytogenetics:	16q22.1
RefSeq ORF:	1620
Synonyms:	D16S2531E; EST25263; SNT2B2; SNT3; SNTL
Summary:	Dystrophin is a large, rod-like cytoskeletal protein found at the inner surface of muscle fibers. Dystrophin is missing in Duchenne Muscular Dystrophy patients and is present in reduced amounts in Becker Muscular Dystrophy patients. The protein encoded by this gene is a peripheral membrane protein found associated with dystrophin and dystrophin-related proteins. This gene is a member of the syntrophin gene family, which contains at least two other structurally-related genes. [provided by RefSeq, Jul 2008]
Protein Families:	Secreted Protein

Product images:



Coomassie blue staining of purified SNTB2 protein (Cat# [TP308309]). The protein was produced from HEK293T cells transfected with SNTB2 cDNA clone (Cat# [RC208309]) using MegaTran 2.0 (Cat# [TT210002]).