

Product datasheet for **TP308305L**

GGA1 (NM_001001560) Human Recombinant Protein

Product data:

Product Type:	Recombinant Proteins
Description:	Recombinant protein of human golgi associated, gamma adaptin ear containing, ARF binding protein 1 (GGA1), transcript variant 2, 1 mg
Species:	Human
Expression Host:	HEK293T
Expression cDNA Clone or AA Sequence:	>RC208305 protein sequence Red =Cloning site Green =Tags(s)

MEPAMEPETLEARINRATNPLNKELDWASINGFCEQLNEDFEGPPLATRLLAHKIQSPQEWEAIQALTVL
ETCMKSCGKRFHDEVGKFRFLNELIKVVSPKYLGSRTSEKVKNKILELLYSWTVGLPEEVKIAEAYQMLK
KQGIVKSDPKLPDDTTFFPLPPRPKNVIFEDEEKSKMLARLLKSSHPEDLRAANKLIKEMVQEDQKRMEK
ISKRVNAIEEVNANNVKKLTEMVMSSHQGGAAAGSSEDLMKELYQRCERMRTPLFRLASDTEDEALGLS
DPTPPSGPSLDGTGWNSFQSSDATEPPAPALAQAPSMESRPPAQTSLPASSGLDDLKLLGKTLQQLPP
ESQQRWEKQQPTPRLTLRDLQNKSSSCSSPSSSATSLLHTVSPEPPRPPQPVPTELSLASITVPLESI
KPSNILPVTYDQHGFRILFHFARDPLPGRSDVLVWVWVSMSTAPQPIRNIVFQSAVPKVMKVKLQPPSG
TELPANPIVHPSAITQVLLLANPQKEKVRRLRYKLFTMGDQTYNEMGDVDQFPPPETWGSL

TRTRPLEQKLISEEDLAANDILDYKDDDDKV

Tag:	C-Myc/DDK
Predicted MW:	61.2 kDa
Concentration:	>0.05 µg/µL as determined by microplate BCA method
Purity:	> 80% as determined by SDS-PAGE and Coomassie blue staining
Buffer:	25 mM Tris-HCl, 100 mM glycine, pH 7.3, 10% glycerol
Preparation:	Recombinant protein was captured through anti-DDK affinity column followed by conventional chromatography steps.
Note:	For testing in cell culture applications, please filter before use. Note that you may experience some loss of protein during the filtration process.
Storage:	Store at -80°C.



[View online »](#)

Stability: Stable for 12 months from the date of receipt of the product under proper storage and handling conditions. Avoid repeated freeze-thaw cycles.

RefSeq: [NP_001001560](#)

Locus ID: 26088

UniProt ID: [Q9UJY5](#)

RefSeq Size: 2924

Cytogenetics: 22q13.1

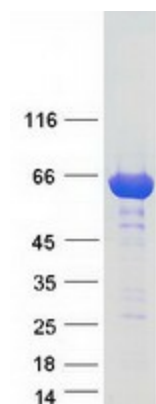
RefSeq ORF: 1656

Summary: This gene encodes a member of the Golgi-localized, gamma adaptin ear-containing, ARF-binding (GGA) protein family. Members of this family are ubiquitous coat proteins that regulate the trafficking of proteins between the trans-Golgi network and the lysosome. These proteins share an amino-terminal VHS domain which mediates sorting of the mannose 6-phosphate receptors at the trans-Golgi network. They also contain a carboxy-terminal region with homology to the ear domain of gamma-adaptins. Multiple alternatively spliced transcript variants encoding different isoforms have been found for this gene. [provided by RefSeq, Jul 2008]

Protein Families: Druggable Genome

Protein Pathways: Lysosome

Product images:



Coomassie blue staining of purified GGA1 protein (Cat# [TP308305]). The protein was produced from HEK293T cells transfected with GGA1 cDNA clone (Cat# [RC208305]) using MegaTran 2.0 (Cat# [TT210002]).