

## Product datasheet for **TP308295M**

### STIMATE (NM\_198563) Human Recombinant Protein

#### Product data:

Product Type:	Recombinant Proteins
Description:	Recombinant protein of human transmembrane protein 110 (TMEM110), 100 µg
Species:	Human
Expression Host:	HEK293T
Expression cDNA Clone or AA Sequence:	>RC208295 protein sequence <b>Red</b> =Cloning site <b>Green</b> =Tags(s)
	<p>MQGPAGNASRGLPGGPPSTVASGAGRCESGALMHSFGIFLQGLLGVAFASTLMLKRFREPKHERRPWRI W FLDTSKQAIGMLFIHFANVYLADLTEEDPCSLYLINFLLDATVGMLLIYVGVRASVSVLVEWQQWESLRFG EYGDPLQCGAWVGQCALYIVIMIFEKSVFIVLLILQWKKVALLNPIENPDLKLAIVMLIVPFFVNALMF WVDNFLMRKGKTKAKLEERGANQDSRNGSKVRYRRAASHEESESEILISADDEMEESDVEEDLRRRLTPL KPVKKKKHFRGLPV</p> <p><b>TRTRPLEQKLISEEDLAANDILDYKDDDDKV</b></p>
Tag:	C-Myc/DDK
Predicted MW:	33 kDa
Concentration:	>0.05 µg/µL as determined by microplate BCA method
Purity:	> 80% as determined by SDS-PAGE and Coomassie blue staining
Buffer:	25 mM Tris-HCl, 100 mM glycine, pH 7.3, 10% glycerol
Preparation:	Recombinant protein was captured through anti-DDK affinity column followed by conventional chromatography steps.
Note:	For testing in cell culture applications, please filter before use. Note that you may experience some loss of protein during the filtration process.
Storage:	Store at -80°C.
Stability:	Stable for 12 months from the date of receipt of the product under proper storage and handling conditions. Avoid repeated freeze-thaw cycles.
RefSeq:	<u><a href="#">NP_940965</a></u>
Locus ID:	375346



[View online »](#)

UniProt ID: [Q86TL2](#)

RefSeq Size: 4746

Cytogenetics: 3p21.1

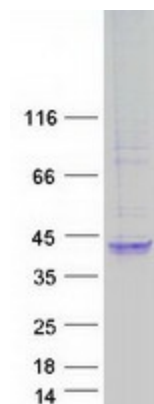
RefSeq ORF: 882

Synonyms: TMEM110

**Summary:** Acts as a regulator of store-operated  $\text{Ca}^{2+}$  entry (SOCE) at junctional sites that connect the endoplasmic reticulum (ER) and plasma membrane (PM), called ER-plasma membrane (ER-PM) junction or cortical ER (PubMed:26322679, PubMed:26644574). SOCE is a  $\text{Ca}^{2+}$  influx following depletion of intracellular  $\text{Ca}^{2+}$  stores (PubMed:26322679). Acts by interacting with STIM1, promoting STIM1 conformational switch (PubMed:26322679). Involved in STIM1 relocalization to ER-PM junctions (PubMed:26644574). Contributes to the maintenance and reorganization of store-dependent ER-PM junctions (PubMed:26644574).[UniProtKB/Swiss-Prot Function]

**Protein Families:** Transmembrane

### Product images:



Coomassie blue staining of purified STIMATE protein (Cat# [TP308295]). The protein was produced from HEK293T cells transfected with STIMATE cDNA clone (Cat# [RC208295]) using MegaTran 2.0 (Cat# [TT210002]).