

Product datasheet for **TP308279L**

SYS1 (NM_033542) Human Recombinant Protein

Product data:

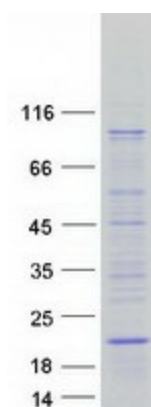
Product Type:	Recombinant Proteins
Description:	Recombinant protein of human SYS1 Golgi-localized integral membrane protein homolog (S. cerevisiae) (SYS1), transcript variant 1, 1 mg
Species:	Human
Expression Host:	HEK293T
Expression cDNA Clone or AA Sequence:	>RC208279 protein sequence Red =Cloning site Green =Tags(s)
	 MAGQFRSYVWDPLLILSQIVLMQTVYYGSLGLWLALVDGLVRSSPSLDQMFD AEILGFSTPPGRLSMMSF ILNALTCALGLLYFIRRGKQCLDFTVTVHFFHLLGCWFYSSRFPSALTWWLVQAVCIALMAVIGEYLCMR TELKEIPLNSAPKSNV TRTRPLEQKLISEEDLAANDILDYKDDDDKV
Tag:	C-Myc/DDK
Predicted MW:	17.4 kDa
Concentration:	>0.05 µg/µL as determined by microplate BCA method
Purity:	> 80% as determined by SDS-PAGE and Coomassie blue staining
Buffer:	25 mM Tris-HCl, 100 mM glycine, pH 7.3, 10% glycerol
Preparation:	Recombinant protein was captured through anti-DDK affinity column followed by conventional chromatography steps.
Note:	For testing in cell culture applications, please filter before use. Note that you may experience some loss of protein during the filtration process.
Storage:	Store at -80°C.
Stability:	Stable for 12 months from the date of receipt of the product under proper storage and handling conditions. Avoid repeated freeze-thaw cycles.
RefSeq:	NP_291020
Locus ID:	90196
UniProt ID:	Q8N2H4



[View online »](#)

RefSeq Size:	2802
Cytogenetics:	20q13.12
RefSeq ORF:	468
Synonyms:	C20orf169; dj453C12.4; dj453C12.4.1
Summary:	SYS1 forms a complex with ADP-ribosylation factor-related protein ARFRP1 (MIM 604699) and targets ARFRP1 to the Golgi apparatus (Behnia et al., 2004 [PubMed 15077113]).[supplied by OMIM, Aug 2009]
Protein Families:	Transmembrane

Product images:



Coomassie blue staining of purified SYS1 protein (Cat# [TP308279]). The protein was produced from HEK293T cells transfected with SYS1 cDNA clone (Cat# [RC208279]) using MegaTran 2.0 (Cat# [TT210002]).