

## Product datasheet for **TP308279**

### **SYS1 (NM\_033542) Human Recombinant Protein**

#### Product data:

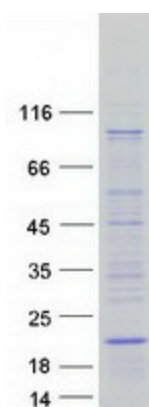
Product Type:	Recombinant Proteins
Description:	Recombinant protein of human SYS1 Golgi-localized integral membrane protein homolog ( <i>S. cerevisiae</i> ) (SYS1), transcript variant 1, 20 µg
Species:	Human
Expression Host:	HEK293T
Expression cDNA Clone or AA Sequence:	>RC208279 protein sequence <b>Red</b> =Cloning site <b>Green</b> =Tags(s)
	MAGQFRSYVWDPLLILSQIVLMQTVVYGSGLGLWLALVDGLVRSSPSLDQMFD AEILGFSTPPGRLSMMSF ILNALTALGLLYFIRRGKQCLDFTVTVHFFHLLGCWFYSSRFPSALTWLVQAVCIALMAVIGEYLCMR TELKEIPLNSAPKSNV
	<b>TRTRPLEQKLISEEDLAANDILDYKDDDDKV</b>
Tag:	C-Myc/DDK
Predicted MW:	17.4 kDa
Concentration:	>0.05 µg/µL as determined by microplate BCA method
Purity:	> 80% as determined by SDS-PAGE and Coomassie blue staining
Buffer:	25 mM Tris-HCl, 100 mM glycine, pH 7.3, 10% glycerol
Preparation:	Recombinant protein was captured through anti-DDK affinity column followed by conventional chromatography steps.
Note:	For testing in cell culture applications, please filter before use. Note that you may experience some loss of protein during the filtration process.
Storage:	Store at -80°C.
Stability:	Stable for 12 months from the date of receipt of the product under proper storage and handling conditions. Avoid repeated freeze-thaw cycles.
RefSeq:	<a href="#">NP_291020</a>
Locus ID:	90196
UniProt ID:	<a href="#">Q8N2H4</a>



[View online »](#)

RefSeq Size:	2802
Cytogenetics:	20q13.12
RefSeq ORF:	468
Synonyms:	C20orf169; dj453C12.4; dj453C12.4.1
Summary:	SYS1 forms a complex with ADP-ribosylation factor-related protein ARFRP1 (MIM 604699) and targets ARFRP1 to the Golgi apparatus (Behnia et al., 2004 [PubMed 15077113]).[supplied by OMIM, Aug 2009]
Protein Families:	Transmembrane

### Product images:



Coomassie blue staining of purified SYS1 protein (Cat# TP308279). The protein was produced from HEK293T cells transfected with SYS1 cDNA clone (Cat# [RC208279]) using MegaTran 2.0 (Cat# [TT210002]).