

## Product datasheet for **TP308276**

### CD3E (NM\_000733) Human Recombinant Protein

#### Product data:

Product Type:	Recombinant Proteins
Description:	Recombinant protein of human CD3e molecule, epsilon (CD3-TCR complex) (CD3E), 20 µg
Species:	Human
Expression Host:	HEK293T
Expression cDNA Clone or AA Sequence:	>RC208276 protein sequence <b>Red</b> =Cloning site <b>Green</b> =Tags(s)
	 MQSGTHWRV LGLCLLSVGVWGQDGN EEMGGITQTPYKVSISGTTVILTCPQYPGSEILWQHNDKNIGGDE DDKNIGSDEDHLSLKEFSELEQSGYYVCYPRGSKPEDANFYLYLRARVCENCMEMDVMSVATIVIDICI TGGLLLL VYYWSKNRKAKAKPVTRGAGAGGRQRGQNKERPPVPNPDYEPKRGQRDLYSGLNQRR I  <b>TRTRPLEQKLISEEDLAANDILDYKDDDDKV</b>
Tag:	C-Myc/DDK
Predicted MW:	20.7 kDa
Concentration:	>0.1 µg/µL as determined by microplate BCA method
Purity:	> 80% as determined by SDS-PAGE and Coomassie blue staining
Buffer:	25 mM Tris-HCl, 100 mM glycine, pH 7.3, 10% glycerol
Preparation:	Recombinant protein was captured through anti-DDK affinity column followed by conventional chromatography steps.
Note:	For testing in cell culture applications, please filter before use. Note that you may experience some loss of protein during the filtration process.
Storage:	Store at -80°C.
Stability:	Stable for 12 months from the date of receipt of the product under proper storage and handling conditions. Avoid repeated freeze-thaw cycles.
RefSeq:	<a href="#">NP_000724</a>
Locus ID:	916
UniProt ID:	<a href="#">P07766</a>
RefSeq Size:	1534



[View online »](#)

Cytogenetics: 11q23.3

RefSeq ORF: 621

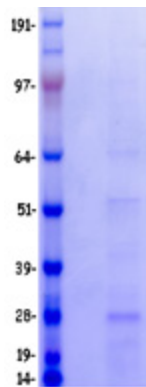
Synonyms: IMD18; T3E; TCRE

**Summary:** The protein encoded by this gene is the CD3-epsilon polypeptide, which together with CD3-gamma, -delta and -zeta, and the T-cell receptor alpha/beta and gamma/delta heterodimers, forms the T-cell receptor-CD3 complex. This complex plays an important role in coupling antigen recognition to several intracellular signal-transduction pathways. The genes encoding the epsilon, gamma and delta polypeptides are located in the same cluster on chromosome 11. The epsilon polypeptide plays an essential role in T-cell development. Defects in this gene cause immunodeficiency. This gene has also been linked to a susceptibility to type I diabetes in women. [provided by RefSeq, Jul 2008]

**Protein Families:** Druggable Genome, Transmembrane

**Protein Pathways:** Hematopoietic cell lineage, Primary immunodeficiency, T cell receptor signaling pathway

### Product images:



Coomassie blue staining of purified CD3E protein (Cat# TP308276). The protein was produced from HEK293T cells transfected with CD3E cDNA clone (Cat# [RC208276]) using MegaTran 2.0 (Cat# [TT210002]).