

## Product datasheet for TP308252

### CECR1 (NM\_017424) Human Recombinant Protein

#### Product data:

Product Type:	Recombinant Proteins
Description:	Recombinant protein of human cat eye syndrome chromosome region, candidate 1 (CECR1), transcript variant 1, 20 µg
Species:	Human
Expression Host:	HEK293T
Expression cDNA Clone or AA Sequence:	>RC208252 protein sequence <b>Red</b> =Cloning site <b>Green</b> =Tags(s)

MLVDGPSEPALCFLLLAVAMSFSGSALSIDETRAHLLLKEKMMRLGGRLVLNTKEELANERLMTLKIAE  
MKEAMRTLIFPPSMHFFQAKHLIERSQVFNILRMMMPKGAALHLHDIGIVTMDWLVRNVTYRPHCHICFTP  
RGIMQFRFAHPTPRPSEKCSKWILLEDIRKRVQNVTEFDDSLRNFTLVTQHPVEVIYTNQNVVWSKFETI  
FFTISGLIHYPVFRDYVFRSMQEFYEDNVLYMEIRARLLPVYELSGEHHDEEWSVKTYQEVAQKQFVETH  
PEFIGIKIYSDHRKDVAVIAESIRMAMGLRIKFPTVAGFDLVGHEDTGHSLHDYKEALMIPAKDGVK  
LPYFFHAGETDWQGTSIDRNILDALMLNTTRIGHGFALSHPALRTYSWKKDPIEVCPISNQVLKLVSD  
LRNHPVATLMATGHPMVISSDDPAMFGAKGLSYDFYEVFMGIGGMKADLRTLKQLAMNSIKYSTLLESEK  
NTFMEIWKKRWDKFIADVATK

**TRTRPLEQKLISEEDLAANDILDYKDDDDKV**

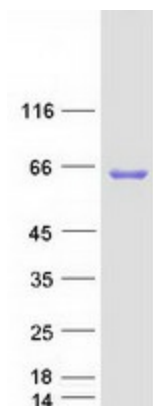
Tag:	C-Myc/DDK
Predicted MW:	55.9 kDa
Concentration:	>0.05 µg/µL as determined by microplate BCA method
Purity:	> 80% as determined by SDS-PAGE and Coomassie blue staining
Buffer:	25 mM Tris-HCl, 100 mM glycine, pH 7.3, 10% glycerol
Preparation:	Recombinant protein was captured through anti-DDK affinity column followed by conventional chromatography steps.
Note:	For testing in cell culture applications, please filter before use. Note that you may experience some loss of protein during the filtration process.
Storage:	Store at -80°C.



[View online »](#)

<b>Stability:</b>	Stable for 12 months from the date of receipt of the product under proper storage and handling conditions. Avoid repeated freeze-thaw cycles.
<b>RefSeq:</b>	<a href="#">NP_059120</a>
<b>Locus ID:</b>	51816
<b>UniProt ID:</b>	<a href="#">Q9NZK5</a>
<b>RefSeq Size:</b>	3947
<b>Cytogenetics:</b>	22q11.1
<b>RefSeq ORF:</b>	1533
<b>Synonyms:</b>	ADA2; ADGF; IDGFL
<b>Summary:</b>	This gene encodes a member of a subfamily of the adenosine deaminase protein family. The encoded protein is one of two adenosine deaminases found in humans, which regulate levels of the signaling molecule, adenosine. The encoded protein is secreted from monocytes undergoing differentiation and may regulate cell proliferation and differentiation. This gene may be responsible for some of the phenotypic features associated with cat eye syndrome. Alternative splicing results in multiple transcript variants. [provided by RefSeq, Aug 2013]
<b>Protein Families:</b>	Druggable Genome, Secreted Protein, Transmembrane

### Product images:



Coomassie blue staining of purified CECR1 protein (Cat# TP308252). The protein was produced from HEK293T cells transfected with CECR1 cDNA clone (Cat# [RC208252]) using MegaTran 2.0 (Cat# [TT210002]).