

Product datasheet for TP308245M

MMP19 (NM_002429) Human Recombinant Protein

Product data:

| | |
|-----------------------|--|
| Product Type: | Recombinant Proteins |
| Description: | Recombinant protein of human matrix metalloproteinase 19 (MMP19), transcript variant 1, 100 µg |
| Species: | Human |
| Expression Host: | HEK293T |
| Expression cDNA | >RC208245 protein sequence |
| Clone or AA Sequence: | Red=Cloning site Green=Tags(s) |

MNCQQLWLGFLLPMTVSGRVLGLAEVAPVDYLSQYGYLQKPLEGSNNFKPEDITEALRAFQEASELPVSG
QLDDATRARMRQPRCGLDPFNQKTLKYLLGRWRKKHLTFRILNLPSTLPPHTARAALRQAFQDWSNVA
PLTFQEVQAGAADIRLSFHGRQSSYCSNTFDGPRVLAHADIPELGSVHFDEDEFWTEGTYRGVNLRIIA
AHEVGHALGLGHSRYSQLMAPVYEGYRPHFKLHPDDVAGIQALYGKKSPIRDEEEETEELPTVPPVPT
EPSPMPDPCSSELDAMMLGPRGKTYAFKGDYVWTVSDSGPGPLFRVSALWEGLPGNLDAAVYSPRTQWIH
FFKGDKVVRYINFKMSPGFPKLNRVEPNLDAALYWPLNQKVFLFKGSGYWQWDELARTDFSSYPKPIKG
LFTGVPNQPSAAMSWQDGRVYFFKGVYWRNLNQQLRVEKGYPRNISHNWMHCRPRTIDTTPSGGNTTPSG
TGITLDTTLSATETTFEY

TRTRPLEQKLISEEDLAANDILDYKDDDDKV

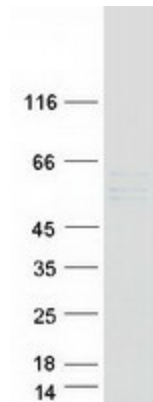
| | |
|----------------|--|
| Tag: | C-Myc/DDK |
| Predicted MW: | 55.3 kDa |
| Concentration: | >0.05 µg/µL as determined by microplate BCA method |
| Purity: | > 80% as determined by SDS-PAGE and Coomassie blue staining |
| Buffer: | 25 mM Tris-HCl, 100 mM glycine, pH 7.3, 10% glycerol |
| Preparation: | Recombinant protein was captured through anti-DDK affinity column followed by conventional chromatography steps. |
| Note: | For testing in cell culture applications, please filter before use. Note that you may experience some loss of protein during the filtration process. |
| Storage: | Store at -80°C. |



[View online »](#)

| | |
|--------------------------|--|
| Stability: | Stable for 12 months from the date of receipt of the product under proper storage and handling conditions. Avoid repeated freeze-thaw cycles. |
| RefSeq: | NP_002420 |
| Locus ID: | 4327 |
| UniProt ID: | Q99542 |
| RefSeq Size: | 3294 |
| Cytogenetics: | 12q13.2 |
| RefSeq ORF: | 1524 |
| Synonyms: | CODA; MMP18; RASI-1 |
| Summary: | This gene encodes a member of a family of proteins that are involved in the breakdown of extracellular matrix in normal physiological processes, such as embryonic development, reproduction, and tissue remodeling, as well as in disease processes, such as arthritis and metastasis. The encoded protein is secreted as an inactive proprotein, which is activated upon cleavage by extracellular proteases. Alternative splicing results in multiple transcript variants for this gene. [provided by RefSeq, Jan 2013] |
| Protein Families: | Protease, Secreted Protein |

Product images:



Coomassie blue staining of purified MMP19 protein (Cat# [TP308245]). The protein was produced from HEK293T cells transfected with MMP19 cDNA clone (Cat# [RC208245]) using MegaTran 2.0 (Cat# [TT210002]).