

Product datasheet for **TP308245**

MMP19 (NM_002429) Human Recombinant Protein

Product data:

Product Type:	Recombinant Proteins
Description:	Recombinant protein of human matrix metalloproteinase 19 (MMP19), transcript variant 1, 20 µg
Species:	Human
Expression Host:	HEK293T
Expression cDNA	>RC208245 protein sequence
Clone or AA Sequence:	Red=Cloning site Green=Tags(s)

MNCQQLWLGFLLPMTVSGRVLGLAEVAPVDYLSQYGYLQKPLEGSNNFKPEDITEALRAFQEASELPVSG
QLDDATRARMRQPRCGLEDPFNQKTLKYLLLRWRKKHLTFRILNLPSTLPPHTARAALRQAFQDWSNVA
PLTFQEVQAGAADIRLSFHGRQSSYCSNTFDGPGRVLAHADIPELGSVHFDEDEFWTEGTYRGVNLRIIA
AHEVGHALGLGHSRYSQLMAPVYEGYRPHFKLHPDDVAGIQALYGKSPVIRDEEEETEELTPVPPVPT
EPSPMPDPCSSELDAMMLGPRGKTYAFKGDYVWTVSDSGPGPLFRVSALWEGLPGNLDAAVYSPRTQWIH
FFKGDKVVRYINFKMSPGFPKLNRVEPNLDAALYWPLNQKVFLFKGSGYWQWDELARTDFSSYPKPIKG
LFTGVPNQPSAAMSWQDGRVYFFKGVYWRNLNQLRVEKGYPRNISHNWMHCRPRTIDTTPSGGNTTSPG
TGITLDTTLSATETTFEY

TRTRPLEQKLISEEDLAANDILDYKDDDDKV

Tag:	C-Myc/DDK
Predicted MW:	55.3 kDa
Concentration:	>0.05 µg/µL as determined by microplate BCA method
Purity:	> 80% as determined by SDS-PAGE and Coomassie blue staining
Buffer:	25 mM Tris-HCl, 100 mM glycine, pH 7.3, 10% glycerol
Preparation:	Recombinant protein was captured through anti-DDK affinity column followed by conventional chromatography steps.
Note:	For testing in cell culture applications, please filter before use. Note that you may experience some loss of protein during the filtration process.
Storage:	Store at -80°C.
Stability:	Stable for 12 months from the date of receipt of the product under proper storage and handling conditions. Avoid repeated freeze-thaw cycles.



[View online >](#)

RefSeq: [NP_002420](#)

Locus ID: 4327

UniProt ID: [Q99542](#)

RefSeq Size: 3294

Cytogenetics: 12q13.2

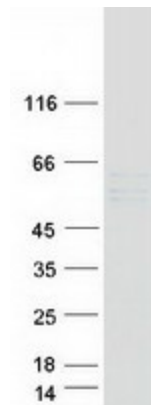
RefSeq ORF: 1524

Synonyms: CODA; MMP18; RASI-1

Summary: This gene encodes a member of a family of proteins that are involved in the breakdown of extracellular matrix in normal physiological processes, such as embryonic development, reproduction, and tissue remodeling, as well as in disease processes, such as arthritis and metastasis. The encoded protein is secreted as an inactive proprotein, which is activated upon cleavage by extracellular proteases. Alternative splicing results in multiple transcript variants for this gene. [provided by RefSeq, Jan 2013]

Protein Families: Protease, Secreted Protein

Product images:



Coomassie blue staining of purified MMP19 protein (Cat# TP308245). The protein was produced from HEK293T cells transfected with MMP19 cDNA clone (Cat# [RC208245]) using MegaTran 2.0 (Cat# [TT210002]).