

## Product datasheet for **TP308238M**

### PI 4 Kinase type 2 beta (PI4K2B) (NM\_018323) Human Recombinant Protein

#### Product data:

**Product Type:** Recombinant Proteins  
**Description:** Recombinant protein of human phosphatidylinositol 4-kinase type 2 beta (PI4K2B), 100 µg  
**Species:** Human  
**Expression Host:** HEK293T  
**Expression cDNA Clone or AA Sequence:** >RC208238 protein sequence  
Red=Cloning site Green=Tags(s)

MEDPSEPDRLASADGGSPEEEEEDGEREPLLPRIAWAHPRRGAPGSASVRLDLAAGEEGEAGDEELPLPPGD  
 VGVSRSSPAELDRSRPAVSVTIGTSEMNAFLDDPEFADIMLRAEQAIEVGIFPERISQGSSGSYFVKDPK  
 RKIIGVFKPKSEEPYGQLNPKWTKYVHKVCCPCCFGRGCLIPNQGYLSEAGAYLVDNKLHLSIVPKTKWV  
 WLVSFTFNNAIDRAKSRGKKYALEKVPKVGKRFHRIGLPPKIGSFQLFVEGYKEAEYWLRFKFEADPLPE  
 NIRQFQSQFERLVLDYIIRNTDRGNDNWLVRYEKQKCEKEIDHKESKWIDDEEFLIKIAAIDNGLAFP  
 FKHPDEWRAYPFHWAWLPQAKVPFSEEIRNLILPYISDMNFVQDLCEDLYELFKTDKGFDKATFESQMSV  
 MRGQILNLTQALRDGKSPFQLVQIPCVIVERSQGGSQGRIVHLSNSFTQTVNCRKPFSSW

TRTRPLEQKLISEEDLAANDILDYKDDDDKV

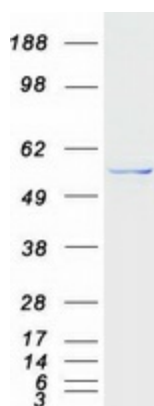
**Tag:** C-Myc/DDK  
**Predicted MW:** 54.6 kDa  
**Concentration:** >0.05 µg/µL as determined by microplate BCA method  
**Purity:** > 80% as determined by SDS-PAGE and Coomassie blue staining  
**Buffer:** 25 mM Tris-HCl, 100 mM glycine, pH 7.3, 10% glycerol  
**Preparation:** Recombinant protein was captured through anti-DDK affinity column followed by conventional chromatography steps.  
**Note:** For testing in cell culture applications, please filter before use. Note that you may experience some loss of protein during the filtration process.  
**Storage:** Store at -80°C.  
**Stability:** Stable for 12 months from the date of receipt of the product under proper storage and handling conditions. Avoid repeated freeze-thaw cycles.  
**RefSeq:** [NP\\_060793](#)



[View online »](#)

Locus ID:	55300
UniProt ID:	<a href="#">Q8TCG2</a>
RefSeq Size:	3601
Cytogenetics:	4p15.2
RefSeq ORF:	1443
Synonyms:	PI4KIIIB; PIK42B
Summary:	This gene encodes a member of the type II PI4 kinase protein family. The encoded protein is primarily cytosolic and contributes to overall PI4-kinase activity along with other protein family members. This protein is involved in early T cell activation. [provided by RefSeq, Dec 2016]
Protein Families:	Druggable Genome

### Product images:



Coomassie blue staining of purified PI4K2B protein (Cat# [TP308238]). The protein was produced from HEK293T cells transfected with PI4K2B cDNA clone (Cat# [RC208238]) using MegaTran 2.0 (Cat# [TT210002]).