

Product datasheet for **TP308238**

PI 4 Kinase type 2 beta (PI4K2B) (NM_018323) Human Recombinant Protein

Product data:

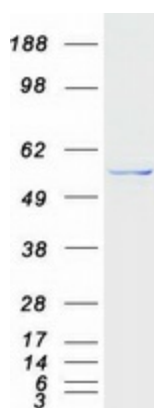
Product Type:	Recombinant Proteins
Description:	Recombinant protein of human phosphatidylinositol 4-kinase type 2 beta (PI4K2B), 20 µg
Species:	Human
Expression Host:	HEK293T
Expression cDNA Clone or AA Sequence:	>RC208238 protein sequence Red =Cloning site Green =Tags(s)
	<p>MEDPSEPDRLASADGGSPREEEDGEREPLLPRIAWAHPRRGAPGSAVRLLDAAGEEGEAGDEELPLPPGD VGVSRSSPAELDRSRPAVSVTIGTSEMNAFLDDPEFADIMLRAEQAIEVGIFPERISQSSGSYFVKDPK RKIIGVFKPKSEEPYQQLNPKWTKYVHKVCCPCCFGRGCLIPNQGYLEAGAYLVDNKLHLSIVPKTKV WLVSETFNYNAIDRAKSRGKKYALEKVPKVGKFRIGLPPKIGSFQLFVEGYKEAEYWLKFEADPLPE NIRKQFQSQFERLVLDYIIRNTDRGNDNWLVRYEKQKCEKEIDHKESKWIDDEEFLIKIAAIDNGLAFP FKHPDEWRAYPFHWAWLPQAKVPFSEEIRNLILPYISDMNFVQDLCEDLYELFKTDKGFDFKATFESQMSV MRGQILNLTQALRDGKSPFQLVQIPCVIVERSQGGSQGRIVHLSNSFTQTVNCRKPFSSW</p> <p>TRTRPLEQKLISEEDLAANDILDYKDDDDKV</p>
Tag:	C-Myc/DDK
Predicted MW:	54.6 kDa
Concentration:	>0.05 µg/µL as determined by microplate BCA method
Purity:	> 80% as determined by SDS-PAGE and Coomassie blue staining
Buffer:	25 mM Tris-HCl, 100 mM glycine, pH 7.3, 10% glycerol
Preparation:	Recombinant protein was captured through anti-DDK affinity column followed by conventional chromatography steps.
Note:	For testing in cell culture applications, please filter before use. Note that you may experience some loss of protein during the filtration process.
Storage:	Store at -80°C.
Stability:	Stable for 12 months from the date of receipt of the product under proper storage and handling conditions. Avoid repeated freeze-thaw cycles.
RefSeq:	<u>NP_060793</u>



[View online »](#)

Locus ID:	55300
UniProt ID:	Q8TCG2
RefSeq Size:	3601
Cytogenetics:	4p15.2
RefSeq ORF:	1443
Synonyms:	PI4KIIB; PIK42B
Summary:	This gene encodes a member of the type II PI4 kinase protein family. The encoded protein is primarily cytosolic and contributes to overall PI4-kinase activity along with other protein family members. This protein is involved in early T cell activation. [provided by RefSeq, Dec 2016]
Protein Families:	Druggable Genome

Product images:



Coomassie blue staining of purified PI4K2B protein (Cat# TP308238). The protein was produced from HEK293T cells transfected with PI4K2B cDNA clone (Cat# [RC208238]) using MegaTran 2.0 (Cat# [TT210002]).