

Product datasheet for TP308221

JPH4 (NM_032452) Human Recombinant Protein

Product data:

Product Type: Recombinant Proteins

Description: Recombinant protein of human junctophilin 4 (JPH4), 20 µg

Species: Human

Expression Host: HEK293T

Expression cDNA >RC208221 representing NM_032452

Clone or AA **Red**=Cloning site **Green**=Tags(s)

Sequence:

MSPGGKFDFFDDGGCYVGGWEAGRAHG YGVCTGPGAQGEYSGCWAHGFESLGVFTGPGGHSYQGHWQQGKR
EGLGVERKSRW TYRGEWL GGLKGRSGVWESV SGLRYAGLWKDGFQDGYGTETYS DGGTYQGQWQAGKRHG
YGVRSVPYHQ AALLRSPRRTSLDSGHSDPPTPPPPLPLPGDEGGSPASGSRGGFVLAGPGDADGASSRK
RTPAAGGFFRRSLLL SGLRAGGRRSSLGSKRGLRSEVSSEVGSTGPPGSEASGPPAAAPPALIEGSATE
VYAGEWRADRRSFGV SQRSNGLRYEGEWLGNQRHGYGRTRTRPDGSREEGKYKRNLVHGGRVRSLLPLA
LRRGKVKEKVDRAVEGARRAVS AARQRQEIAAARAADALLKAVAASSVAEKAVEAARMAKLIAQDLQPML
EAPGRRPRQDSEGS DTEPLDEDS PGVYENGLTPSEGSP ELPSSPASSRQPWRPPACRSPLPPGGDQGPFS
SPKAWPEEWGGAGAQA EELAGYEADEAGM QGPGPRDGSPLLGGCSDSSGSLREEEGEDEEPLPLRAPA
GTEPEPIAMLVLRGSSSRGH DAGCLTEELGEP AATERPAQP GAANPLVGVAVALLDLSLAF LFSQLLT

TRTRPLEQKLISEEDLAANDILDYKDDDDKV

Tag: C-Myc/DDK

Predicted MW: 65.7 kDa

Concentration: >0.05 µg/µL as determined by microplate BCA method

Purity: > 80% as determined by SDS-PAGE and Coomassie blue staining

Buffer: 25 mM Tris-HCl, 100 mM glycine, pH 7.3, 10% glycerol

Preparation: Recombinant protein was captured through anti-DDK affinity column followed by conventional chromatography steps.

Note: For testing in cell culture applications, please filter before use. Note that you may experience some loss of protein during the filtration process.

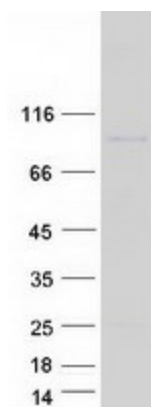
Storage: Store at -80°C.



[View online »](#)

Stability:	Stable for 12 months from the date of receipt of the product under proper storage and handling conditions. Avoid repeated freeze-thaw cycles.
RefSeq:	NP_115828
Locus ID:	84502
UniProt ID:	Q96J16
RefSeq Size:	4396
Cytogenetics:	14q11.2
RefSeq ORF:	1884
Synonyms:	JP4; JPHL1
Summary:	This gene encodes a member of the junctophilin family of transmembrane proteins that are involved in the formation of the junctional membrane complexes between the plasma membrane and the endoplasmic/sarcoplasmic reticulum in excitable cells. The encoded protein contains a conserved N-terminal repeat region called the membrane occupation and recognition nexus sequence that is found in other members of the junctophilin family. Alternative splicing results in multiple transcript variants. [provided by RefSeq, Mar 2009]

Product images:



Coomassie blue staining of purified JPH4 protein (Cat# TP308221). The protein was produced from HEK293T cells transfected with JPH4 cDNA clone (Cat# [RC208221]) using MegaTran 2.0 (Cat# [TT210002]).