

Product datasheet for **TP308220L**

RNF11 (NM_014372) Human Recombinant Protein

Product data:

Product Type:	Recombinant Proteins
Description:	Recombinant protein of human ring finger protein 11 (RNF11), 1 mg
Species:	Human
Expression Host:	HEK293T
Expression cDNA Clone or AA Sequence:	>RC208220 protein sequence Red =Cloning site Green =Tags(s)
	 MGNCLKSPTSDDISLLHESQSDRASFGEGTEPDQEPPIPYQEQVPVPVYHPTPSQTRLATQLTEEEQIRI AQRIGLIQHLPKGVYDPGRDGESEKKIRECVICMMDFVYGDPIRFLPCMHIYHLDCIDDWLMRSFTCPSCM EPVDAALLSSYETN TRTRPLEQKLISEEDLAANDILDYKDDDDKV
Tag:	C-Myc/DDK
Predicted MW:	17.3 kDa
Concentration:	>0.05 µg/µL as determined by microplate BCA method
Purity:	> 80% as determined by SDS-PAGE and Coomassie blue staining
Buffer:	25 mM Tris-HCl, 100 mM glycine, pH 7.3, 10% glycerol
Preparation:	Recombinant protein was captured through anti-DDK affinity column followed by conventional chromatography steps.
Note:	For testing in cell culture applications, please filter before use. Note that you may experience some loss of protein during the filtration process.
Storage:	Store at -80°C.
Stability:	Stable for 12 months from the date of receipt of the product under proper storage and handling conditions. Avoid repeated freeze-thaw cycles.
RefSeq:	NP_055187
Locus ID:	26994
UniProt ID:	Q9Y3C5
RefSeq Size:	3082



[View online »](#)

Cytogenetics: 1p32.3

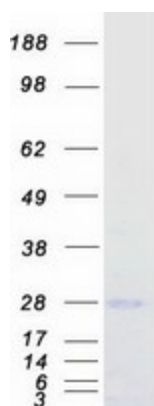
RefSeq ORF: 462

Synonyms: CGI-123; SID1669

Summary: The protein encoded by this gene contains a RING-H2 finger motif, which is known to be important for protein-protein interactions. The expression of this gene has been shown to be induced by mutant RET proteins (MEN2A/MEN2B). The germline mutations in RET gene are known to be responsible for the development of multiple endocrine neoplasia (MEN). [provided by RefSeq, Jul 2008]

Protein Families: Druggable Genome

Product images:



Coomassie blue staining of purified RNF11 protein (Cat# [TP308220]). The protein was produced from HEK293T cells transfected with RNF11 cDNA clone (Cat# [RC208220]) using MegaTran 2.0 (Cat# [TT210002]).