

Product datasheet for **TP308220**

RNF11 (NM_014372) Human Recombinant Protein

Product data:

Product Type: Recombinant Proteins

Description: Recombinant protein of human ring finger protein 11 (RNF11), 20 µg

Species: Human

Expression Host: HEK293T

**Expression cDNA Clone
or AA Sequence:** >RC208220 protein sequence
Red=Cloning site **Green**=Tags(s)

MGNCLKSPTSDDISLLHESQSDRASFGEGTEPDQEPPIPYQEQVPVPVYHPTPSQTRLATQLTEEEQIRI
AQRIGLIQHLPKGVYDPGRDGEKIRECVICMMDFVYGDPIRFLPCMHIYHLDCIDDWLMRSFTCPSCM
EPVDAALLSSYETN

TRTRPLEQKLISEEDLAANDILDYKDDDDKV

Tag: C-Myc/DDK

Predicted MW: 17.3 kDa

Concentration: >0.05 µg/µL as determined by microplate BCA method

Purity: > 80% as determined by SDS-PAGE and Coomassie blue staining

Buffer: 25 mM Tris-HCl, 100 mM glycine, pH 7.3, 10% glycerol

Preparation: Recombinant protein was captured through anti-DDK affinity column followed by conventional chromatography steps.

Note: For testing in cell culture applications, please filter before use. Note that you may experience some loss of protein during the filtration process.

Storage: Store at -80°C.

Stability: Stable for 12 months from the date of receipt of the product under proper storage and handling conditions. Avoid repeated freeze-thaw cycles.

RefSeq: [NP_055187](#)

Locus ID: 26994

UniProt ID: [Q9Y3C5](#)

RefSeq Size: 3082



[View online »](#)

Cytogenetics: 1p32.3

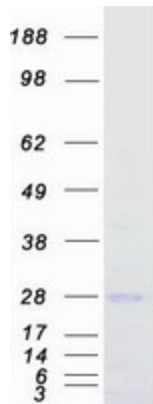
RefSeq ORF: 462

Synonyms: CGI-123; SID1669

Summary: The protein encoded by this gene contains a RING-H2 finger motif, which is known to be important for protein-protein interactions. The expression of this gene has been shown to be induced by mutant RET proteins (MEN2A/MEN2B). The germline mutations in RET gene are known to be responsible for the development of multiple endocrine neoplasia (MEN). [provided by RefSeq, Jul 2008]

Protein Families: Druggable Genome

Product images:



Coomassie blue staining of purified RNF11 protein (Cat# TP308220). The protein was produced from HEK293T cells transfected with RNF11 cDNA clone (Cat# [RC208220]) using MegaTran 2.0 (Cat# [TT210002]).