

Product datasheet for **TP308185L**

ETV6 (NM_001987) Human Recombinant Protein

Product data:

Product Type:	Recombinant Proteins
Description:	Recombinant protein of human ets variant 6 (ETV6), 1 mg
Species:	Human
Expression Host:	HEK293T
Expression cDNA Clone or AA Sequence:	>RC208185 protein sequence Red =Cloning site Green =Tags(s)

MSETPAQCSIKQERISYTPPESPVPSYASSTPLHVPVPRALRMEEDSIRLPAHLRLQPIYWSRDDVAQWL
KWAENEFLRPIDSNTFEMNGKALLLLTKEDFRYRSPHSGDVLVELLQHILKQRKPRILFSPFFHPGNSI
HTQPEVILHQNHEDNCVQRTPRPSVDNVHHNPPTIELLHRSRSPITTNHRSPDPEQRPLRSPLDNMIR
RLSPAERAQGPRPHQENNHQESYPLSVSPMENNHCASSESHPKPSSPRQESTRVIQLMPSPIMHPLILN
PRHSVDFKQSRLSEDGLHREGKPINLSHREDLAYMNHIMVSVSPPEEHAMPIGRIADCROLLWDYVYQLLS
DSRYENFIRWEDKESKIFRIVDPNGLARLWGNHKNRTNMTYEKMSRALRHYYKLNIIIRKEPGQRLFRFM
KTPDEIMSGRTDRLEHLESQELDEQIQEDEC

SGPTRTRPLEQKLISEEDLAANDILDYKDDDDKV

Tag:	C-Myc/DDK
Predicted MW:	52.8 kDa
Concentration:	>0.05 µg/µL as determined by microplate BCA method
Purity:	> 80% as determined by SDS-PAGE and Coomassie blue staining
Buffer:	25 mM Tris-HCl, 100 mM glycine, pH 7.3, 10% glycerol
Preparation:	Recombinant protein was captured through anti-DDK affinity column followed by conventional chromatography steps.
Note:	For testing in cell culture applications, please filter before use. Note that you may experience some loss of protein during the filtration process.
Storage:	Store at -80°C.
Stability:	Stable for 12 months from the date of receipt of the product under proper storage and handling conditions. Avoid repeated freeze-thaw cycles.
RefSeq:	<u>NP_001978</u>



[View online »](#)

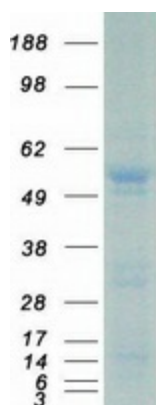
Locus ID: 2120
UniProt ID: [P41212](#), [A0A0S2Z3C9](#)
RefSeq Size: 5989
Cytogenetics: 12p13.2
RefSeq ORF: 1356
Synonyms: TEL; TEL/ABL; THC5

Summary: This gene encodes an ETS family transcription factor. The product of this gene contains two functional domains: a N-terminal pointed (PNT) domain that is involved in protein-protein interactions with itself and other proteins, and a C-terminal DNA-binding domain. Gene knockout studies in mice suggest that it is required for hematopoiesis and maintenance of the developing vascular network. This gene is known to be involved in a large number of chromosomal rearrangements associated with leukemia and congenital fibrosarcoma. [provided by RefSeq, Sep 2008]

Protein Families: Druggable Genome, Transcription Factors

Protein Pathways: Dorso-ventral axis formation

Product images:



Coomassie blue staining of purified ETV6 protein (Cat# [TP308185]). The protein was produced from HEK293T cells transfected with ETV6 cDNA clone (Cat# [RC208185]) using MegaTran 2.0 (Cat# [TT210002]).