

## Product datasheet for **TP308167**

### GIMAP1 (NM\_130759) Human Recombinant Protein

#### Product data:

Product Type:	Recombinant Proteins
Description:	Recombinant protein of human GTPase, IMAP family member 1 (GIMAP1), 20 µg
Species:	Human
Expression Host:	HEK293T
Expression cDNA Clone or AA Sequence:	>RC208167 protein sequence <b>Red</b> =Cloning site <b>Green</b> =Tags(s)
	 MGGRKMATDEENVYGLEENAQSRQESTRRLILVGRTGAGKSATGNSILGQRRFFSRLGATSVTRACTTGS RRWDKCHVEVDTPDIFSSQVSKTDPGCEERGHCYLLSAPGPHALLLVTLQGRFTAQDQQAVRQVRDMFG EDVLKWMVIVFTRKEDLAGGSLHDYVSNTENRALRELVAECGGRVCAFDNRATGREQEAQVEQLLGMVEG LVLEHKGAHYSNEYELAQVLRWAGPEERLRRVAERVAARVQRRPWGAWLSARLWKWLKSPRSWRLGLAL LLGGALLFWVLLHRRWSEAVA EVGPD  <b>TRTRPLEQKLISEEDLAANDILDYKDDDDKV</b>
Tag:	C-Myc/DDK
Predicted MW:	34.2 kDa
Concentration:	>0.05 µg/µL as determined by microplate BCA method
Purity:	> 80% as determined by SDS-PAGE and Coomassie blue staining
Buffer:	25 mM Tris-HCl, 100 mM glycine, pH 7.3, 10% glycerol
Preparation:	Recombinant protein was captured through anti-DDK affinity column followed by conventional chromatography steps.
Note:	For testing in cell culture applications, please filter before use. Note that you may experience some loss of protein during the filtration process.
Storage:	Store at -80°C.
Stability:	Stable for 12 months from the date of receipt of the product under proper storage and handling conditions. Avoid repeated freeze-thaw cycles.
RefSeq:	<u><a href="#">NP_570115</a></u>
Locus ID:	170575



[View online »](#)

UniProt ID: [Q8WWP7](#), [A0A090N8Z4](#)

RefSeq Size: 4430

Cytogenetics: 7q36.1

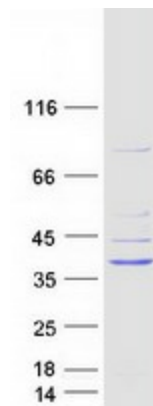
RefSeq ORF: 918

Synonyms: HIMAP1; IAN2; IMAP1; IMAP38

**Summary:** This gene encodes a protein belonging to the GTP-binding superfamily and to the immuno-associated nucleotide (IAN) subfamily of nucleotide-binding proteins. In humans, the IAN subfamily genes are located in a cluster at 7q36.1. This gene is thought to be involved in the differentiation of T helper (Th) cells of the Th1 lineage, and the related mouse gene has been shown to be critical for the development of mature B and T lymphocytes. Read-through transcription exists between this gene and the downstream GIMAP5 (GTPase, IMAP family member 5) gene. [provided by RefSeq, Dec 2010]

**Protein Families:** Transmembrane

### Product images:



Coomassie blue staining of purified GIMAP1 protein (Cat# TP308167). The protein was produced from HEK293T cells transfected with GIMAP1 cDNA clone (Cat# [RC208167]) using MegaTran 2.0 (Cat# [TT210002]).