

Product datasheet for **TP308152L**

Kallikrein 8 (KLK8) (NM_007196) Human Recombinant Protein

Product data:

| | |
|---------------------------------------|--|
| Product Type: | Recombinant Proteins |
| Description: | Recombinant protein of human kallikrein-related peptidase 8 (KLK8), transcript variant 1, 1 mg |
| Species: | Human |
| Expression Host: | HEK293T |
| Expression cDNA Clone or AA Sequence: | >RC208152 protein sequence Red =Cloning site Green =Tags(s) |
| | MGRPRPRAAKTWMFLLLLGGAWAGHSRAQEDKVLGGHECQPHSQPWQAALFQGQQLLCGGVLVGGNWVLT AAHCKKPKYTVRLGDHSLQNKDGPQEIPVWQSIPHPCYNSSDVEDHNHDLMLLQLRDQASLGSKVKPIS LADHCTQPGQKCTVSGWGTVTSPRENFPDTLNCAEVKIFPQKKCEDAYPGQITDVMVCAGSSKGADTCQG DSGGPLVCDGALQGITSWGS DPCGRSDKPGVYTNICRYLDWIKKIIGSKG TRTRPLEQKLISEEDLAANDILDYKDDDDKV |
| Tag: | C-Myc/DDK |
| Predicted MW: | 27.9 kDa |
| Concentration: | >0.05 µg/µL as determined by microplate BCA method |
| Purity: | > 80% as determined by SDS-PAGE and Coomassie blue staining |
| Buffer: | 25 mM Tris-HCl, 100 mM glycine, pH 7.3, 10% glycerol |
| Preparation: | Recombinant protein was captured through anti-DDK affinity column followed by conventional chromatography steps. |
| Note: | For testing in cell culture applications, please filter before use. Note that you may experience some loss of protein during the filtration process. |
| Storage: | Store at -80°C. |
| Stability: | Stable for 12 months from the date of receipt of the product under proper storage and handling conditions. Avoid repeated freeze-thaw cycles. |
| RefSeq: | NP_009127 |
| Locus ID: | 11202 |
| UniProt ID: | O60259 |



[View online »](#)

RefSeq Size: 1023

Cytogenetics: 19q13.41

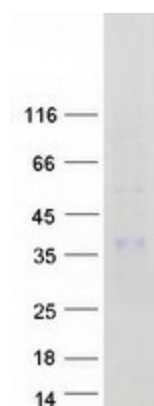
RefSeq ORF: 780

Synonyms: HNP; NP; NRPN; PRSS19; TADG14

Summary: Kallikreins are a subgroup of serine proteases having diverse physiological functions. Growing evidence suggests that many kallikreins are implicated in carcinogenesis and some have potential as novel cancer and other disease biomarkers. This gene is one of the fifteen kallikrein subfamily members located in tandem in a gene cluster on chromosome 19. The encoded protein may be involved in proteolytic cascade in the skin and may serve as a biomarker for ovarian cancer. Alternate splicing of this gene results in multiple transcript variants encoding different isoforms. [provided by RefSeq, Jul 2013]

Protein Families: Druggable Genome, Secreted Protein, Transmembrane

Product images:



Coomassie blue staining of purified KLK8 protein (Cat# [TP308152]). The protein was produced from HEK293T cells transfected with KLK8 cDNA clone (Cat# [RC208152]) using MegaTran 2.0 (Cat# [TT210002]).