

## Product datasheet for **TP308146**

### Synaptotagmin VI (SYT6) (NM\_205848) Human Recombinant Protein

#### Product data:

Product Type:	Recombinant Proteins
Description:	Recombinant protein of human synaptotagmin VI (SYT6), 20 µg
Species:	Human
Expression Host:	HEK293T
Expression cDNA Clone or AA Sequence:	>RC208146 protein sequence <b>Red</b> =Cloning site <b>Green</b> =Tags(s)

MPWRNKEASSPSSANPPLEALQSPSFRGNMADKCLKDPSTLGFLEAAVKISHTSPDIPAEVQMSVKEHIMR  
HTRLQRQTTEPASSTRHTSFKRHLPRQMHVSSVDYGNELPPAAEQPTSIGRIKPELYKQKSVDGEDAKSE  
ATKSCGKINFSRLRYDYETETLIVRILKAFDLPKDFCGSSDPYVKIYLLPDRCKLQTRVHRKTLNPTFD  
ENFHFPVPEELADRKLHLSVDFDFRSRHMIGEVILDNLFEASDLSRETSIWKDIQYATSESVDLGEI  
MFSLCYLPTAGRLTLTVIKCRNLKAMDITGYSDPYVKVSLLCDGRRLKKKKTTIKKNTLNPVYNEAIIIFD  
IPPENMDQVSLISVMDYDRVGHNEIIGVCRVGITAEGLRDHWNEMLAYPRKPIAHWHSLVEVKKSFKE  
GNPRL

**TRTRPLEQKLISEEDLAANDILDYKDDDDKV**

Tag:	C-Myc/DDK
Predicted MW:	48.3 kDa
Concentration:	>0.05 µg/µL as determined by microplate BCA method
Purity:	> 80% as determined by SDS-PAGE and Coomassie blue staining
Buffer:	25 mM Tris-HCl, 100 mM glycine, pH 7.3, 10% glycerol
Preparation:	Recombinant protein was captured through anti-DDK affinity column followed by conventional chromatography steps.
Note:	For testing in cell culture applications, please filter before use. Note that you may experience some loss of protein during the filtration process.
Storage:	Store at -80°C.
Stability:	Stable for 12 months from the date of receipt of the product under proper storage and handling conditions. Avoid repeated freeze-thaw cycles.
RefSeq:	<u><a href="#">NP_995320</a></u>



[View online »](#)

Locus ID: 148281

UniProt ID: [Q5T7P8](#), [I6L9C3](#)

RefSeq Size: 4357

Cytogenetics: 1p13.2

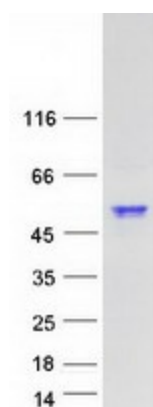
RefSeq ORF: 1275

Synonyms: sytVI

**Summary:** The protein encoded by this gene belongs to the synaptotagmin family. Synaptotagmins share a common domain structure that includes a transmembrane domain and a cytoplasmic region composed of 2 C2 domains, and are involved in calcium-dependent exocytosis of synaptic vesicles. This protein has been shown to be a key component of the secretory machinery involved in acrosomal exocytosis. Alternatively spliced transcript variants have been found for this gene. [provided by RefSeq, Dec 2011]

**Protein Families:** Secreted Protein, Transmembrane

### Product images:



Coomassie blue staining of purified SYT6 protein (Cat# TP308146). The protein was produced from HEK293T cells transfected with SYT6 cDNA clone (Cat# [RC208146]) using MegaTran 2.0 (Cat# [TT210002]).