

Product datasheet for **TP308129L**

CRKL (NM_005207) Human Recombinant Protein

Product data:

Product Type:	Recombinant Proteins
Description:	Recombinant protein of human v-crk sarcoma virus CT10 oncogene homolog (avian)-like (CRKL), 1 mg
Species:	Human
Expression Host:	HEK293T
Expression cDNA Clone or AA Sequence:	>RC208129 representing NM_005207 Red =Cloning site Green =Tags(s)

MSSARFDSSDRSAWYMGVSRQEAQTRLQGQRHGMFLVRDSSTCPGDYVLSVSENSRVSHYIINSLPNRR
FKIGDQEFDHLPALLEFYKIHLYLDTTTLIEPAPRYPPPMGVSAPNLPATAEDNLEYVRTLYDFPGNDAE
DLPFKKGEILVIEKPEEQWWSARNKDGRVGMIPVPYVEKLVRSPPHGKHKGNRNSNSYGIPEPAHAYAQP
QTTTLPVAVSGSPGAAITPLPSTQNGPVFAKAIQKRVPCAYDKTALALEVGDIVKVTRMNINGQWEGEVN
GRKGLFPFTHVKIFDPQNPDENE

TRTRPLEQKLISEEDLAANDILDYKDDDDKV

Tag:	C-Myc/DDK
Predicted MW:	33.6 kDa
Concentration:	>0.05 µg/µL as determined by microplate BCA method
Purity:	> 80% as determined by SDS-PAGE and Coomassie blue staining
Buffer:	25 mM Tris-HCl, 100 mM glycine, pH 7.3, 10% glycerol
Preparation:	Recombinant protein was captured through anti-DDK affinity column followed by conventional chromatography steps.
Note:	For testing in cell culture applications, please filter before use. Note that you may experience some loss of protein during the filtration process.
Storage:	Store at -80°C.
Stability:	Stable for 12 months from the date of receipt of the product under proper storage and handling conditions. Avoid repeated freeze-thaw cycles.
RefSeq:	NP_005198
Locus ID:	1399



[View online »](#)

UniProt ID: [P46109](#)

RefSeq Size: 5235

Cytogenetics: 22q11.21

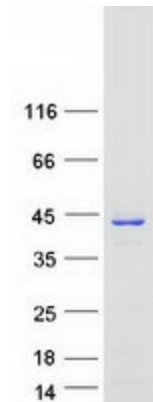
RefSeq ORF: 909

Summary: This gene encodes a protein kinase containing SH2 and SH3 (src homology) domains which has been shown to activate the RAS and JUN kinase signaling pathways and transform fibroblasts in a RAS-dependent fashion. It is a substrate of the BCR-ABL tyrosine kinase, plays a role in fibroblast transformation by BCR-ABL, and may be oncogenic.[provided by RefSeq, Jan 2009]

Protein Families: Druggable Genome

Protein Pathways: Chemokine signaling pathway, Chronic myeloid leukemia, ErbB signaling pathway, Fc gamma R-mediated phagocytosis, Focal adhesion, Insulin signaling pathway, MAPK signaling pathway, Neurotrophin signaling pathway, Pathways in cancer, Regulation of actin cytoskeleton, Renal cell carcinoma

Product images:



Coomassie blue staining of purified CRKL protein (Cat# [TP308129]). The protein was produced from HEK293T cells transfected with CRKL cDNA clone (Cat# [RC208129]) using MegaTran 2.0 (Cat# [TT210002]).