

## Product datasheet for **TP308103M**

### SLAP2 (SLA2) (NM\_032214) Human Recombinant Protein

#### Product data:

**Product Type:** Recombinant Proteins

**Description:** Recombinant protein of human Src-like-adaptor 2 (SLA2), transcript variant 1, 100 µg

**Species:** Human

**Expression Host:** HEK293T

**Expression cDNA Clone or AA Sequence:** >RC208103 protein sequence  
**Red**=Cloning site **Green**=Tags(s)

MGSLPSRRKSLPSPSLSSSVQGGPVTMEAERSKATAVALGSFPAGGPAELSLRLGEPLTIVSEDGDWWT  
VLSEVSGREYNIPSVHVAKVSHGWLYEGLSREKAEELLLPGNPGGAFLIRESQTRRGSYSLSVRLSRPA  
SWDRIRHYRIHCLDNGWLYISPRLTFPSLQALVDHYSELADDICLLKEPCVLQRAGPLPGKDIPLPVT  
QRTPLNWKELDSSLLFSEAATGEESLLSEGLRESLSFYISLNDEAVSLDDA

**TRTRPLEQKLISEEDLAANDILDYKDDDDKV**

**Tag:** C-Myc/DDK

**Predicted MW:** 28.4 kDa

**Concentration:** >0.05 µg/µL as determined by microplate BCA method

**Purity:** > 80% as determined by SDS-PAGE and Coomassie blue staining

**Buffer:** 25 mM Tris-HCl, 100 mM glycine, pH 7.3, 10% glycerol

**Preparation:** Recombinant protein was captured through anti-DDK affinity column followed by conventional chromatography steps.

**Note:** For testing in cell culture applications, please filter before use. Note that you may experience some loss of protein during the filtration process.

**Storage:** Store at -80°C.

**Stability:** Stable for 12 months from the date of receipt of the product under proper storage and handling conditions. Avoid repeated freeze-thaw cycles.

**RefSeq:** [NP\\_115590](#)

**Locus ID:** 84174

**UniProt ID:** [Q9H6Q3](#)



[View online »](#)

RefSeq Size: 2569

Cytogenetics: 20q11.23

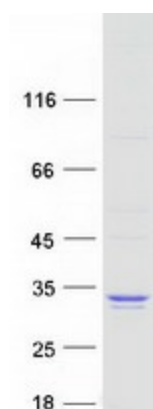
RefSeq ORF: 783

Synonyms: C20orf156; MARS; SLAP-2; SLAP2

**Summary:** This gene encodes a member of the SLAP family of adapter proteins. The encoded protein may play an important receptor-proximal role in downregulating T and B cell-mediated responses and inhibits antigen receptor-induced calcium mobilization. This protein interacts with Cas-Br-M (murine) ecotropic retroviral transforming sequence c. Two transcript variants encoding distinct isoforms have been identified for this gene. [provided by RefSeq, Jul 2008]

**Protein Families:** Druggable Genome, Transcription Factors

### Product images:



Coomassie blue staining of purified SLA2 protein (Cat# [TP308103]). The protein was produced from HEK293T cells transfected with SLA2 cDNA clone (Cat# [RC208103]) using MegaTran 2.0 (Cat# [TT210002]).