

Product datasheet for **TP308103L**

SLAP2 (SLA2) (NM_032214) Human Recombinant Protein

Product data:

Product Type: Recombinant Proteins

Description: Recombinant protein of human Src-like-adaptor 2 (SLA2), transcript variant 1, 1 mg

Species: Human

Expression Host: HEK293T

**Expression cDNA Clone
or AA Sequence:** >RC208103 protein sequence
Red=Cloning site **Green**=Tags(s)

MGSLPSRRKSLPSPSLSSSVQGGPVTMEAERSKATAVALGSFPAGGPAELSLRLGEPLTIVSEDGDWWT
VLSEVSGREYNIPSVHVAKVSHGWLYEGLSREKAEELLLPGNPGGAFLIRESQTRRGSYSLSVRLSRPA
SWDRIRHYRIHCLDNGWLYISPRLTFPSLQALVDHYSELADDICLLKEPCVLQ RAGPLPGKDIPLPVT
QRTPLNWKELDSSLLFSEAATGEESLLSEGLRESLSFYISLNDEAVSLDDA

TRTRPLEQKLISEEDLAANDILDYKDDDDKV

Tag: C-Myc/DDK

Predicted MW: 28.4 kDa

Concentration: >0.05 µg/µL as determined by microplate BCA method

Purity: > 80% as determined by SDS-PAGE and Coomassie blue staining

Buffer: 25 mM Tris-HCl, 100 mM glycine, pH 7.3, 10% glycerol

Preparation: Recombinant protein was captured through anti-DDK affinity column followed by conventional chromatography steps.

Note: For testing in cell culture applications, please filter before use. Note that you may experience some loss of protein during the filtration process.

Storage: Store at -80°C.

Stability: Stable for 12 months from the date of receipt of the product under proper storage and handling conditions. Avoid repeated freeze-thaw cycles.

RefSeq: [NP_115590](#)

Locus ID: 84174

UniProt ID: [Q9H6Q3](#)



[View online >](#)

RefSeq Size: 2569

Cytogenetics: 20q11.23

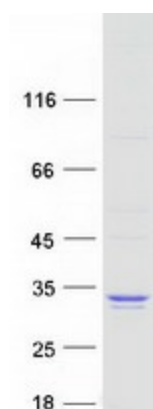
RefSeq ORF: 783

Synonyms: C20orf156; MARS; SLAP-2; SLAP2

Summary: This gene encodes a member of the SLAP family of adapter proteins. The encoded protein may play an important receptor-proximal role in downregulating T and B cell-mediated responses and inhibits antigen receptor-induced calcium mobilization. This protein interacts with Cas-Br-M (murine) ecotropic retroviral transforming sequence c. Two transcript variants encoding distinct isoforms have been identified for this gene. [provided by RefSeq, Jul 2008]

Protein Families: Druggable Genome, Transcription Factors

Product images:



Coomassie blue staining of purified SLA2 protein (Cat# [TP308103]). The protein was produced from HEK293T cells transfected with SLA2 cDNA clone (Cat# [RC208103]) using MegaTran 2.0 (Cat# [TT210002]).