

Product datasheet for **TP308103**

SLAP2 (SLA2) (NM_032214) Human Recombinant Protein

Product data:

| | |
|---------------------------------------|--|
| Product Type: | Recombinant Proteins |
| Description: | Recombinant protein of human Src-like-adaptor 2 (SLA2), transcript variant 1, 20 µg |
| Species: | Human |
| Expression Host: | HEK293T |
| Expression cDNA Clone or AA Sequence: | >RC208103 protein sequence Red =Cloning site Green =Tags(s) |
| | <p>MGSLPSRRKSLPSPSLSSSVQGGPVTMEAERSKATAVALGSFPAGGPAELSLRLGEPLTIVSEDGDWWT VLSEVSGREYNIPSVHVAKVSHGWLYEGLSREKAEELLLPGNPGGAFLIRESQTRRGSYSLSVRLSRPA SWDRIRHYRIHCLDNGWLYISPRLTFPSLQALVDHYSELADDICLLKEPCVLQ RAGPLPGKDIPLPVT QRTPLNWKELDSSLLFSEAATGEESLLSEGLRESLSFYISLNDEAVSLDDA</p> <p>TRTRPLEQKLISEEDLAANDILDYKDDDDKV</p> |
| Tag: | C-Myc/DDK |
| Predicted MW: | 28.4 kDa |
| Concentration: | >0.05 µg/µL as determined by microplate BCA method |
| Purity: | > 80% as determined by SDS-PAGE and Coomassie blue staining |
| Buffer: | 25 mM Tris-HCl, 100 mM glycine, pH 7.3, 10% glycerol |
| Preparation: | Recombinant protein was captured through anti-DDK affinity column followed by conventional chromatography steps. |
| Note: | For testing in cell culture applications, please filter before use. Note that you may experience some loss of protein during the filtration process. |
| Storage: | Store at -80°C. |
| Stability: | Stable for 12 months from the date of receipt of the product under proper storage and handling conditions. Avoid repeated freeze-thaw cycles. |
| RefSeq: | NP_115590 |
| Locus ID: | 84174 |
| UniProt ID: | Q9H6Q3 |



[View online »](#)

RefSeq Size: 2569

Cytogenetics: 20q11.23

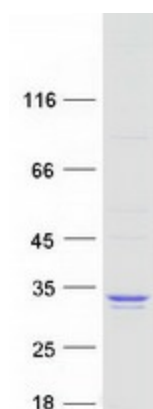
RefSeq ORF: 783

Synonyms: C20orf156; MARS; SLAP-2; SLAP2

Summary: This gene encodes a member of the SLAP family of adapter proteins. The encoded protein may play an important receptor-proximal role in downregulating T and B cell-mediated responses and inhibits antigen receptor-induced calcium mobilization. This protein interacts with Cas-Br-M (murine) ecotropic retroviral transforming sequence c. Two transcript variants encoding distinct isoforms have been identified for this gene. [provided by RefSeq, Jul 2008]

Protein Families: Druggable Genome, Transcription Factors

Product images:



Coomassie blue staining of purified SLA2 protein (Cat# TP308103). The protein was produced from HEK293T cells transfected with SLA2 cDNA clone (Cat# [RC208103]) using MegaTran 2.0 (Cat# [TT210002]).