

Product datasheet for **TP308102**

CaMKK (CAMKK1) (NM_032294) Human Recombinant Protein

Product data:

Product Type:	Recombinant Proteins
Description:	Recombinant protein of human calcium/calmodulin-dependent protein kinase kinase 1, alpha (CAMKK1), transcript variant 1, 20 µg
Species:	Human
Expression Host:	HEK293T
Expression cDNA Clone or AA Sequence:	>RC208102 protein sequence Red =Cloning site Green =Tags(s)

MEGGPAVCCQDPRAELVERVAAIDVTHLEEADGGPEPTRNGVDPPPRARAASVIPGSTRLLPARPSLSA
 RKLSLQERPAGSYLEAQAGPYATGPASHISPRAWRRPTIESHHVAISDAEDCVQLNQYKLQSEIGKGAYG
 VRLAYNESEDRHYAMKVLSKKKLLKQYGFPRRPPRGSQAAQGGPAKQLPLERVYQEIAILKKLDHVN
 VVKLIEVLDDPAEDNLYLVFDLLRKGPMVEVPCDKPFSEEQARLYLRDVILGLEYLHCQKIVHRDIKPSN
 LLLGDDGHVKIADFGVSNQFEGNDAQLSSTAGTPAFMAPEAISDSGQSFSGKALDWATGVTLYCFVYGK
 CPFIDDFILALHRKIKNEPVVFPPEPEISEELKDILKMLDKNPETRIGVDPDIKHPWVTKNGEELPSE
 EEHCSVVEVTEEEVKNSVRLIPSWTTVILVKSMLRKRSGFNGPFEPQARREERSMSAPGNLLVKEGFEGGG
 KSPELPGVQEDEAAS

TRTRPLEQKLISEEDLAANDILDYKDDDDKV

Tag:	C-Myc/DDK
Predicted MW:	55.6 kDa
Concentration:	>0.05 µg/µL as determined by microplate BCA method
Purity:	> 80% as determined by SDS-PAGE and Coomassie blue staining
Buffer:	25 mM Tris-HCl, 100 mM glycine, pH 7.3, 10% glycerol
Preparation:	Recombinant protein was captured through anti-DDK affinity column followed by conventional chromatography steps.
Note:	For testing in cell culture applications, please filter before use. Note that you may experience some loss of protein during the filtration process.
Storage:	Store at -80°C.



[View online »](#)

Stability: Stable for 12 months from the date of receipt of the product under proper storage and handling conditions. Avoid repeated freeze-thaw cycles.

RefSeq: [NP_115670](#)

Locus ID: 84254

UniProt ID: [Q8N5S9](#)

RefSeq Size: 3583

Cytogenetics: 17p13.2

RefSeq ORF: 1515

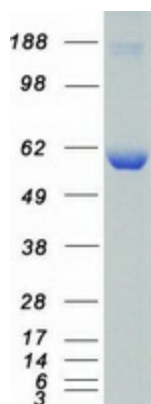
Synonyms: CAMKKA

Summary: The product of this gene belongs to the Serine/Threonine protein kinase family, and to the Ca(2+)/calmodulin-dependent protein kinase subfamily. This protein plays a role in the calcium/calmodulin-dependent (CaM) kinase cascade. Three transcript variants encoding two distinct isoforms have been identified for this gene. [provided by RefSeq, Jul 2008]

Protein Families: Druggable Genome, Protein Kinase

Protein Pathways: Adipocytokine signaling pathway

Product images:



Coomassie blue staining of purified CAMKK1 protein (Cat# TP308102). The protein was produced from HEK293T cells transfected with CAMKK1 cDNA clone (Cat# [RC208102]) using MegaTran 2.0 (Cat# [TT210002]).