

Product datasheet for **TP308098M**

NYREN18 (NUB1) (NM_016118) Human Recombinant Protein

Product data:

Product Type:	Recombinant Proteins
Description:	Recombinant protein of human negative regulator of ubiquitin-like proteins 1 (NUB1), 100 µg
Species:	Human
Expression Host:	HEK293T
Expression cDNA Clone or AA Sequence:	>RC208098 representing NM_016118 Red =Cloning site Green =Tags(s)

MAQKKYLQAKLTQFLREDRIQLWKPPYTDENKKVGLALKDLAKQYSDRLECCENEVEKVIIERCKAIER
GTGNDNYRTTGIATIEVFLPPRLKKDRKNLLETRLHITGRELRSKIAETFGLQENYIKIVINKKQLQLGK
TLEEQGVAHNVKAMVLELKQSEEDARKNFQLEEEQNEAKLKEKQIQRTKRGLEILAKRAAETVVDPEMT
PYLDIANQTGRSIRIPPSEKALMLAMGYHEKGRAFLKRKEYGIALPCLLDADKYFCECCRELLDVTVDNY
AVLQLDIVWCYFRLEQLECLDDAEKKNLAQKCFKNCYGENHQRLVHIKGNCGKEKVLFLRLYLLQGIRN
YHSGNDVEAYEYLNKARQLFKELYIDPSKVDNLLQLGFTAQEARLGLRACDGNVDHAATHITNRRELAQ
IRKEEKEKRRRLENIRFLKGMGYSTHAAQQILLSNPQMWWLNDSPETDNRQESPSQENIDRLVYMGFD
ALVAEAALRVFRGNVQLAAQTLAHNGGSLPPELPLSPEDSLSPATSPSDSAGTSSASTDEDMETEAVNE
ILEDIPEHEEDYLDSTLEDEEIIIAEYLSYVENRKSATKKN

TRTRPLEQKLISEEDLAANDILDYKDDDDKV

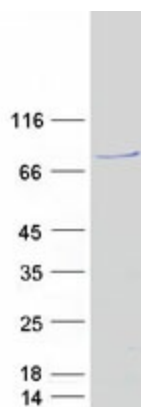
Tag:	C-Myc/DDK
Predicted MW:	68.9 kDa
Concentration:	>0.05 µg/µL as determined by microplate BCA method
Purity:	> 80% as determined by SDS-PAGE and Coomassie blue staining
Buffer:	25 mM Tris-HCl, 100 mM glycine, pH 7.3, 10% glycerol
Preparation:	Recombinant protein was captured through anti-DDK affinity column followed by conventional chromatography steps.
Note:	For testing in cell culture applications, please filter before use. Note that you may experience some loss of protein during the filtration process.
Storage:	Store at -80°C.



[View online »](#)

Stability:	Stable for 12 months from the date of receipt of the product under proper storage and handling conditions. Avoid repeated freeze-thaw cycles.
RefSeq:	NP_057202
Locus ID:	51667
UniProt ID:	Q9Y5A7 , H3BM14
RefSeq Size:	3112
Cytogenetics:	7q36.1
RefSeq ORF:	1803
Synonyms:	BS4; NUB1L; NYREN18
Summary:	This gene encodes a protein that functions as a negative regulator of NEDD8, a ubiquitin-like protein that conjugates with cullin family members in order to regulate vital biological events. The protein encoded by this gene regulates the NEDD8 conjugation system post-transcriptionally by recruiting NEDD8 and its conjugates to the proteasome for degradation. This protein interacts with the product of the AIPL1 gene, which is associated with Leber congenital amaurosis, an inherited retinopathy, and mutations in that gene can abolish interaction with this protein, which may contribute to the pathogenesis. This protein is also known to accumulate in Lewy bodies in Parkinson's disease and dementia with Lewy bodies, and in glial cytoplasmic inclusions in multiple system atrophy, with this abnormal accumulation being specific to alpha-synucleinopathy lesions. Alternative splicing of this gene results in multiple transcript variants. [provided by RefSeq, Aug 2011]
Protein Families:	Druggable Genome

Product images:



Coomassie blue staining of purified NUB1 protein (Cat# [TP308098]). The protein was produced from HEK293T cells transfected with NUB1 cDNA clone (Cat# [RC208098]) using MegaTran 2.0 (Cat# [TT210002]).