

## Product datasheet for TP308076

### RALA (NM\_005402) Human Recombinant Protein

#### Product data:

Product Type:	Recombinant Proteins
Description:	Recombinant protein of human v-ral simian leukemia viral oncogene homolog A (ras related) (RALA), 20 µg
Species:	Human
Expression Host:	HEK293T
Expression cDNA Clone or AA Sequence:	>RC208076 protein sequence Red=Cloning site Green=Tags(s)

MAANKPKGQNSLALHKVIMVGGVGSALTQFMDEFVEDYEPTKADSYRKKVLDGEEVQIDILDTA  
GQEDYAAIRDNYFRSGEGFLCVFSITEMESFAATADFREQILRVKEDENVPFLLVGNKSDLEDKRQVSVE  
EAKNRAEQWNVNYVETSAKTRANVDKVFDFLMREIRARKMEDSKEKNGKKKRKSLAKRIRERCIL

TRTRPLEQKLISEEDLAANDILDYKDDDDKV

Tag:	C-Myc/DDK
Predicted MW:	23.4 kDa
Concentration:	>0.05 µg/µL as determined by microplate BCA method
Purity:	> 80% as determined by SDS-PAGE and Coomassie blue staining
Buffer:	25 mM Tris-HCl, 100 mM glycine, pH 7.3, 10% glycerol
Preparation:	Recombinant protein was captured through anti-DDK affinity column followed by conventional chromatography steps.
Note:	For testing in cell culture applications, please filter before use. Note that you may experience some loss of protein during the filtration process.
Storage:	Store at -80°C.
Stability:	Stable for 12 months from the date of receipt of the product under proper storage and handling conditions. Avoid repeated freeze-thaw cycles.
RefSeq:	<u><a href="#">NP_005393</a></u>
Locus ID:	5898
UniProt ID:	<u><a href="#">P11233</a></u>



[View online »](#)

RefSeq Size: 2828

Cytogenetics: 7p14.1

RefSeq ORF: 618

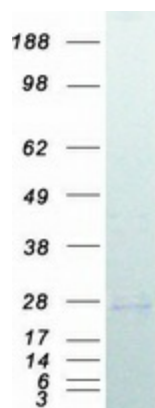
Synonyms: HINCONS; RAL

**Summary:** The product of this gene belongs to the small GTPase superfamily, Ras family of proteins. GTP-binding proteins mediate the transmembrane signaling initiated by the occupancy of certain cell surface receptors. This gene encodes a low molecular mass ras-like GTP-binding protein that shares about 50% similarity with other ras proteins. [provided by RefSeq, Jul 2008]

**Protein Families:** Druggable Genome

**Protein Pathways:** Pancreatic cancer, Pathways in cancer

### Product images:



Coomassie blue staining of purified RALA protein (Cat# TP308076). The protein was produced from HEK293T cells transfected with RALA cDNA clone (Cat# [RC208076]) using MegaTran 2.0 (Cat# [TT210002]).