

Product datasheet for **TP308075M**

SPATA2L (NM_152339) Human Recombinant Protein

Product data:

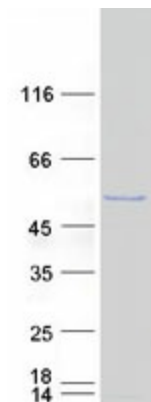
Product Type:	Recombinant Proteins
Description:	Recombinant protein of human spermatogenesis associated 2-like (SPATA2L), 100 µg
Species:	Human
Expression Host:	HEK293T
Expression cDNA Clone or AA Sequence:	>RC208075 protein sequence Red =Cloning site Green =Tags(s)
	<p>MGSSLSSEDIRQCLERELRRGRAGVCGDPSLRVLWQILVEDFDLHGALQDDALALLTDGLWGRADLAPA LRGLARAFELLELAHVHLYLLPWRKEFTTIKTFSGGYVHVLKGVLSDDLLKSFQKMGYVRRDHRMLMT ALPPACQLVQVALGCFALRLECEILGEVLAQLGTSVLP AEELLQARRASGDVASCVAWLQQRQAQDEEPP PLPPRGSPAAYRAPLDLYRDLQEDEGSEDASLYGEPSPGPDSPPAELAYRPLWEQSAKLWGTGGRAWEP PAEELPQASSPPYGAL EEGLEPEPSAFSFLSRRELSRPGDLATPESSAAA SPRRIRAEGVPASAYRSVS EPPGYQAHSCLSPGALPTLCCDTCRQLHAAHCAALPACRPGHSLRVLLGDAQRRLWLQRAQMDTLLYNSP GARP</p> <p>TRTRPLEQKLISEEDLAANDILDYKDDDDKV</p>
Tag:	C-Myc/DDK
Predicted MW:	46 kDa
Concentration:	>0.05 µg/µL as determined by microplate BCA method
Purity:	> 80% as determined by SDS-PAGE and Coomassie blue staining
Buffer:	25 mM Tris-HCl, 100 mM glycine, pH 7.3, 10% glycerol
Preparation:	Recombinant protein was captured through anti-DDK affinity column followed by conventional chromatography steps.
Note:	For testing in cell culture applications, please filter before use. Note that you may experience some loss of protein during the filtration process.
Storage:	Store at -80°C.
Stability:	Stable for 12 months from the date of receipt of the product under proper storage and handling conditions. Avoid repeated freeze-thaw cycles.
RefSeq:	<u>NP_689552</u>



[View online »](#)

Locus ID: 124044
UniProt ID: [Q8IUW3](#)
RefSeq Size: 2388
Cytogenetics: 16q24.3
RefSeq ORF: 1272
Synonyms: C16orf76; tamo

Product images:



Coomassie blue staining of purified SPATA2L protein (Cat# [TP308075]). The protein was produced from HEK293T cells transfected with SPATA2L cDNA clone (Cat# [RC208075]) using MegaTran 2.0 (Cat# [TT210002]).