

Product datasheet for **TP308075L**

SPATA2L (NM_152339) Human Recombinant Protein

Product data:

Product Type: Recombinant Proteins

Description: Recombinant protein of human spermatogenesis associated 2-like (SPATA2L), 1 mg

Species: Human

Expression Host: HEK293T

**Expression cDNA Clone
or AA Sequence:** >RC208075 protein sequence
Red=Cloning site **Green**=Tags(s)

MGSSLSSEDIRQCLERELRRGRAGVCGDPSLRVLWQILVEDFDLHGALQDDALALLTDGLWGRADLAPA
LRGLARAFELLELAHVHLYLLPWRKEFTTIKTFSGGYVHVLKGVLSDDLLKSFQKMGYVRRDHRMLMT
ALPPACQLVQVALGCFALRLECEILGEVLAQLGTSVLP AEELLQARRASGDVASCVAWLQQRQAQDEEPP
PLPPRGSPAAYRAPLDLYRDLQEDEGSEDASLYGEPSPGPDSPPAELAYRPLWEQSAKLWGTGGRAWEP
PAEELPQASSPPYGAL EEGLEPEPSAFSFLSRRELSRPGDLATPESSAAA SPRRIRAEGVPASAYRSVS
EPPGYQAHSCLSPGALPTLCCDTCRQLHAAHCAALPACRPGHSLRVLLGDAQRRLLWLQRAQMDTLLYNSP
GARP

TRTRPLEQKLISEEDLAANDILDYKDDDDKV

Tag: C-Myc/DDK

Predicted MW: 46 kDa

Concentration: >0.05 µg/µL as determined by microplate BCA method

Purity: > 80% as determined by SDS-PAGE and Coomassie blue staining

Buffer: 25 mM Tris-HCl, 100 mM glycine, pH 7.3, 10% glycerol

Preparation: Recombinant protein was captured through anti-DDK affinity column followed by conventional chromatography steps.

Note: For testing in cell culture applications, please filter before use. Note that you may experience some loss of protein during the filtration process.

Storage: Store at -80°C.

Stability: Stable for 12 months from the date of receipt of the product under proper storage and handling conditions. Avoid repeated freeze-thaw cycles.

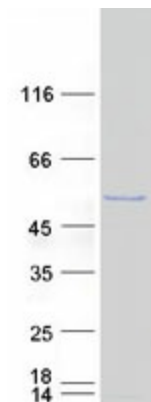
RefSeq: [NP_689552](#)



[View online »](#)

Locus ID: 124044
UniProt ID: [Q8IUW3](#)
RefSeq Size: 2388
Cytogenetics: 16q24.3
RefSeq ORF: 1272
Synonyms: C16orf76; tamo

Product images:



Coomassie blue staining of purified SPATA2L protein (Cat# [TP308075]). The protein was produced from HEK293T cells transfected with SPATA2L cDNA clone (Cat# [RC208075]) using MegaTran 2.0 (Cat# [TT210002]).