

Product datasheet for **TP308069**

MTMR6 (NM_004685) Human Recombinant Protein

Product data:

Product Type:	Recombinant Proteins
Description:	Recombinant protein of human myotubularin related protein 6 (MTMR6), 20 µg
Species:	Human
Expression Host:	HEK293T
Expression cDNA Clone or AA Sequence:	>RC208069 representing NM_004685 Red =Cloning site Green =Tags(s)

MEHIRTTKVEQVKLLDRFSTSNKSLTGTLYLTATHLLFIDSHQKETWILHHHIASVEKLALTTSGCPLVI
QCKNFRTVHFIVPRERDCHDIYNSLLQLSKQAKYEDLYAFSYNPKQNDSERLQGWQLIDLAEYKRMGVP
NSHWQLSDANRDYKICETYPRELYVPRIASKPIIVGSSKFRSKGRFPVLSYYHQDKEAAICRCSQPLSGF
SARCLEDEHLLQAISKANPVNRYMYVMDTRPKLNAMANRAAGKGYENEDNYSNIRFQFVGIENIHMRS
S
LQKLLVNGTKGLSVNDFYSGLESSGWLRIKAVMDAAVFLAKAITVENASVLVHCSDGWDRTSQVCSLG
SLLLDYYRTIKGFMVLEIKDWISFGHKFSERCGQLDGDPEKVPVFTQFLECVWHLTEQFPQAFEFSEA
FLLQIHEHIHSCQFGNFGNCQKEREELKLEKTYSLWPFLLEDQKKYLNPLYSSESHRTVLEPNTVSF
NFKFWRNMYHQFDRTLHPRQSVFNIIMNMNEQNKQLEKDIKDLESKIKQRKNKQTDGILTCELLHSVHP
E
SPNLKTSLCFKEQTLLPVNDALRTIEGSSPADNRYSEYAEFFSKSEPAVVSLEYGVARMTC

TRTRPLEQKLISEEDLAANDILDYKDDDDKV

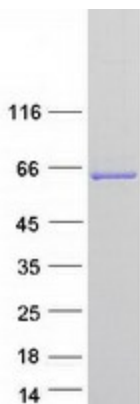
Tag:	C-Myc/DDK
Predicted MW:	71.8 kDa
Concentration:	>0.05 µg/µL as determined by microplate BCA method
Purity:	> 80% as determined by SDS-PAGE and Coomassie blue staining
Buffer:	25 mM Tris-HCl, 100 mM glycine, pH 7.3, 10% glycerol
Preparation:	Recombinant protein was captured through anti-DDK affinity column followed by conventional chromatography steps.
Note:	For testing in cell culture applications, please filter before use. Note that you may experience some loss of protein during the filtration process.
Storage:	Store at -80°C.



[View online »](#)

Stability:	Stable for 12 months from the date of receipt of the product under proper storage and handling conditions. Avoid repeated freeze-thaw cycles.
RefSeq:	NP_004676
Locus ID:	9107
UniProt ID:	Q9Y217
RefSeq Size:	4201
Cytogenetics:	13q12.13
RefSeq ORF:	1863
Summary:	<p>Phosphatase that acts on lipids with a phosphoinositol headgroup (PubMed:19038970, PubMed:22647598). Dephosphorylates phosphatidylinositol 3-phosphate (PtdIns(3)P) and phosphatidylinositol 3,5-bisphosphate (PubMed:19038970, PubMed:22647598) (Probable). Binds with high affinity to phosphatidylinositol 3,5-bisphosphate (PtdIns(3,5)P2) but also to phosphatidylinositol 3-phosphate (PtdIns(3)P), phosphatidylinositol 4-phosphate (PtdIns(4)P), and phosphatidylinositol 5-phosphate (PtdIns(5)P), phosphatidic acid and phosphatidylserine (PubMed:19038970). Negatively regulates ER-Golgi protein transport (By similarity). Probably in association with MTMR9, plays a role in the late stages of macropinocytosis by dephosphorylating phosphatidylinositol 3-phosphate in membrane ruffles (PubMed:24591580). Acts as a negative regulator of KCNN4/KCa3.1 channel activity in CD4(+) T-cells possibly by decreasing intracellular levels of phosphatidylinositol 3-phosphate (PubMed:15831468). Negatively regulates proliferation of reactivated CD4(+) T-cells (PubMed:16847315). In complex with MTMR9, negatively regulates DNA damage-induced apoptosis (PubMed:19038970, PubMed:22647598). The formation of the MTMR6-MTMR9 complex stabilizes both MTMR6 and MTMR9 protein levels (PubMed:19038970). [UniProtKB/Swiss-Prot Function]</p>
Protein Families:	Druggable Genome, Phosphatase
Protein Pathways:	Fructose and mannose metabolism, Metabolic pathways, Riboflavin metabolism, Thiamine metabolism

Product images:



Coomassie blue staining of purified MTMR6 protein (Cat# TP308069). The protein was produced from HEK293T cells transfected with MTMR6 cDNA clone (Cat# [RC208069]) using MegaTran 2.0 (Cat# [TT210002]).

