

Product datasheet for TP308068L

MRPL43 (NM_176792) Human Recombinant Protein

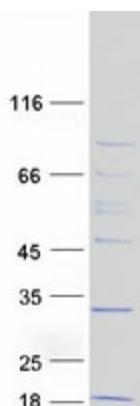
Product data:

Product Type:	Recombinant Proteins
Description:	Recombinant protein of human mitochondrial ribosomal protein L43 (MRPL43), nuclear gene encoding mitochondrial protein, transcript variant 2, 1 mg
Species:	Human
Expression Host:	HEK293T
Expression cDNA Clone or AA Sequence:	>RC208068 protein sequence Red =Cloning site Green =Tags(s) MTARGETPSRFLASVLHNGLG RYVQQLQRLSFSVSRDGASSRGAREFVEREVIDFARRNPGWVIYVNSRPC CVPRVVAEYLN GAVREESIHCKSV EESTLVQKLADQSGLDVIRIRKPFHTDNPSIQGQWHPFTNKPTTF RGLRPREVQDPAPAQDTGLRLSAVAPQILLPGWPDPPDLPTVDPISSSLTSAPAPMLSAVSCLPIVPALT TVCSA TR TRPLEQKLISEEDLAANDILDYKDDDDKV
Tag:	C-Myc/DDK
Predicted MW:	23.3 kDa
Concentration:	>0.05 µg/µL as determined by microplate BCA method
Purity:	> 80% as determined by SDS-PAGE and Coomassie blue staining
Buffer:	25 mM Tris-HCl, 100 mM glycine, pH 7.3, 10% glycerol
Preparation:	Recombinant protein was captured through anti-DDK affinity column followed by conventional chromatography steps.
Note:	For testing in cell culture applications, please filter before use. Note that you may experience some loss of protein during the filtration process.
Storage:	Store at -80°C.
Stability:	Stable for 12 months from the date of receipt of the product under proper storage and handling conditions. Avoid repeated freeze-thaw cycles.
RefSeq:	<u>NP_789762</u>
Locus ID:	84545


[View online »](#)

UniProt ID:	<u>Q8N983</u>
RefSeq Size:	2151
Cytogenetics:	10q24.31
RefSeq ORF:	645
Synonyms:	bMRP36a; L43mt; MRP-L43
Summary:	<p>Mammalian mitochondrial ribosomal proteins are encoded by nuclear genes and help in protein synthesis within the mitochondrion. Mitochondrial ribosomes (mitoribosomes) consist of a small 28S subunit and a large 39S subunit. They have an estimated 75% protein to rRNA composition compared to prokaryotic ribosomes, where this ratio is reversed. Another difference between mammalian mitoribosomes and prokaryotic ribosomes is that the latter contain a 5S rRNA. Among different species, the proteins comprising the mitoribosome differ greatly in sequence, and sometimes in biochemical properties, which prevents easy recognition by sequence homology. This gene encodes a 39S subunit protein. This gene and the gene for a semaphorin class 4 protein (SEMA4G) overlap at map location 10q24.31 and are transcribed in opposite directions. Sequence analysis identified multiple transcript variants encoding at least four different protein isoforms. [provided by RefSeq, Jul 2008]</p>

Product images:



Coomassie blue staining of purified MRPL43 protein (Cat# [TP308068]). The protein was produced from HEK293T cells transfected with MRPL43 cDNA clone (Cat# [RC208068]) using MegaTran 2.0 (Cat# [TT210002]).