

Product datasheet for TP308066M

Cullin 3 (CUL3) (NM_003590) Human Recombinant Protein

Product data:

Product Type:	Recombinant Proteins
Description:	Recombinant protein of human cullin 3 (CUL3), 100 µg
Species:	Human
Expression Host:	HEK293T
Expression cDNA Clone or AA Sequence:	>RC208066 protein sequence Red=Cloning site Green=Tags(s)

MSNLSKGTGSRKDTKMRIRAFPMTMDEKYVNSIWDLLKNAIQEIQRKNNSGLSFEELYRNAYTMVLHKHG
EKLYTGLREVVTEHLINKVREDVLNSLNNNLFQTLNQAWNDHQTAMVMIRDILMYMDRVVYQQNNVENVY
NLGLIIFRDQVRYGCI RDHLRQTLLDMIARERKGEVVDRGAINACQMLMILGLEGRSVYEEDEFAPFL
EMSAEFFQMESQKFLAENSASVYIKKVEARINEEIERVMHCLDKSTEEPIVKVERELISKHMKTIVEME
NSGLVHMLKNGKTEDLGCMYKLSRVPNGLKTMCECMSSYLREQGKALVSEEGEGKPNVDYIQGLLDLKS
RFDRFLLESFNDRLFKQTIAGDFEYFLNLSRSPEYLSLFIDDKLKKGVKGLTEQEVETILDKAMVLF
FMQEKDVFERYKQHLARLLTNKSVSDDSEKNMISKLKTECGCQFTSKLEGMFRDMSISNTTMDDEF
RQLQATGVSLGGVDLTVRVLTTGYWPTQSATPKCNIPAPRHAFAIFRRFYLAHSGRQLTLQHHMGSADLN
ATFYGPVKKEDGSEVGVGAQVTSNTRKHILQVSTFQMTILMLFNREKYTFEEIQQETDIPERELVRA
LQSLACGKPTQRVLTKEPKSKEIENGHIFTVNDQFTSKLHRVKIQTVAAKQGESDPERKETRQKVDDDRK
HEIEAAIVRIMKSRKKMQHNVLVAEVTQQLKARFLPSPVVIKKRIEGLIEREYLARTPEDRKVYTYVA

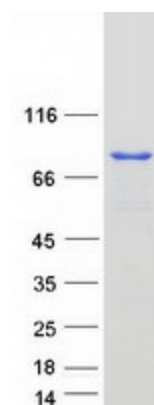
TRTRPLEQKLISEEDLAANDILDYKDDDDKV

Tag:	C-Myc/DDK
Predicted MW:	88.7 kDa
Concentration:	>0.05 µg/µL as determined by microplate BCA method
Purity:	> 80% as determined by SDS-PAGE and Coomassie blue staining
Buffer:	25 mM Tris-HCl, 100 mM glycine, pH 7.3, 10% glycerol
Preparation:	Recombinant protein was captured through anti-DDK affinity column followed by conventional chromatography steps.
Note:	For testing in cell culture applications, please filter before use. Note that you may experience some loss of protein during the filtration process.
Storage:	Store at -80°C.



[View online »](#)

Stability:	Stable for 12 months from the date of receipt of the product under proper storage and handling conditions. Avoid repeated freeze-thaw cycles.
RefSeq:	NP_003581
Locus ID:	8452
UniProt ID:	Q13618 , A0A024R475
RefSeq Size:	6790
Cytogenetics:	2q36.2
RefSeq ORF:	2304
Synonyms:	CUL-3; NEDAUS; PHA2E
Summary:	This gene encodes a member of the cullin protein family. The encoded protein plays a critical role in the polyubiquitination and subsequent degradation of specific protein substrates as the core component and scaffold protein of an E3 ubiquitin ligase complex. Complexes including the encoded protein may also play a role in late endosome maturation. Mutations in this gene are a cause of type 2E pseudohypoaldosteronism. Alternatively spliced transcript variants encoding multiple isoforms have been observed for this gene. [provided by RefSeq, Mar 2012]
Protein Families:	Druggable Genome
Protein Pathways:	Ubiquitin mediated proteolysis

Product images:

Coomassie blue staining of purified CUL3 protein (Cat# [TP308066]). The protein was produced from HEK293T cells transfected with CUL3 cDNA clone (Cat# [RC208066]) using MegaTran 2.0 (Cat# [TT210002]).