

Product datasheet for **TP308046L**

CWC15 (NM_016403) Human Recombinant Protein

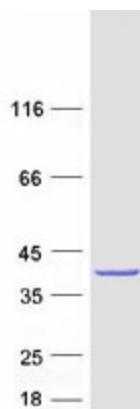
Product data:

Product Type:	Recombinant Proteins
Description:	Recombinant protein of human CWC15 spliceosome-associated protein homolog (<i>S. cerevisiae</i>) (CWC15), 1 mg
Species:	Human
Expression Host:	HEK293T
Expression cDNA Clone or AA Sequence:	>RC208046 protein sequence Red =Cloning site Green =Tags(s)
	 MTTAARPTFEPARGGRGKGEGLDLSQLSKQYSSRDLPSTKIKYRQTTQDAPEEVRNRDFRRELEERERAA AREKNRDRPTREHTTSSSVSKKPRLDQIPAANLDADDPLTDEEDEDFFEEESDDDDTAALLAELEKIKKER AEEQARKEQEQKAAEEERIRMENILSGNPLLNLTGPSQPQANFKVKRRWDDDDVVFKNCAKGVDDQKDKKRF VNDTLRSEFHKKFMEKYIK TRTRPLEQKLISEEDLAANDILDYKDDDDKV
Tag:	C-Myc/DDK
Predicted MW:	26.4 kDa
Concentration:	>0.05 µg/µL as determined by microplate BCA method
Purity:	> 80% as determined by SDS-PAGE and Coomassie blue staining
Buffer:	25 mM Tris-HCl, 100 mM glycine, pH 7.3, 10% glycerol
Preparation:	Recombinant protein was captured through anti-DDK affinity column followed by conventional chromatography steps.
Note:	For testing in cell culture applications, please filter before use. Note that you may experience some loss of protein during the filtration process.
Storage:	Store at -80°C.
Stability:	Stable for 12 months from the date of receipt of the product under proper storage and handling conditions. Avoid repeated freeze-thaw cycles.
RefSeq:	<u>NP_057487</u>
Locus ID:	51503



[View online »](#)

UniProt ID:	Q9P013
RefSeq Size:	1592
Cytogenetics:	11q21
RefSeq ORF:	687
Synonyms:	AD002; C11orf5; Cwf15; HSPC148; ORF5
Summary:	Involved in pre-mRNA splicing as component of the spliceosome (PubMed:28502770, PubMed:28076346). Component of the PRP19-CDC5L complex that forms an integral part of the spliceosome and is required for activating pre-mRNA splicing.[UniProtKB/Swiss-Prot Function]
Protein Pathways:	Spliceosome

Product images:

Coomassie blue staining of purified CWC15 protein (Cat# [TP308046]). The protein was produced from HEK293T cells transfected with CWC15 cDNA clone (Cat# [RC208046]) using MegaTran 2.0 (Cat# [TT210002]).