

Product datasheet for **TP308034M**

WASF2 (NM_006990) Human Recombinant Protein

Product data:

Product Type:	Recombinant Proteins
Description:	Recombinant protein of human WAS protein family, member 2 (WASF2), 100 µg
Species:	Human
Expression Host:	HEK293T
Expression cDNA	>RC208034 representing NM_006990
Clone or AA Sequence:	Red=Cloning site Green=Tags(s)

MPLVTRNIEPRHLCRQTLPSVRSELECVTNITLANVIRQLGSLSKYAEDIFGELFTQANTFASRVSSLAE
RVDRLQVKVTQLDPKEEEVSLQGINTRKAFRSSTIQDQKLFDRNSLPVPVLETYNTCDTPPPLNLTYPYR
DDGKEALKFYTDPSYFFDLWKEKMLQDQTKDIMKEKRKHRKEKKNPNRGNVNPRIKTRKEWEKMKMGQ
EFVESKEKLGTSYPTLVYQNGSIGCVENVDASSYPPPPQSDSASSPSPSFSEDNLPPPPAEFSYPVDN
QRGSLAGPKRSSVSPSHPPPAPPLGSPGPKGFAPPPAPPPPPMIGIPPPPPVGFSGPTPPPP
SPPSFPPHPDFAAPPPPPPPAADYPTLPPPLSQPTGGAPPPPPPPPPGPPPPFTGADGQPAIPPL
SDTTKPKSSLPAVSDARSDLLSAIRQGFQLRRVEEQREQEKRDVVGNDVATILSRRIAVEYSDESDSSE
FDEDDWSD

TRTRPLEQKLISEEDLAANDILDYKDDDDKV

Tag:	C-Myc/DDK
Predicted MW:	54.1 kDa
Concentration:	>0.05 µg/µL as determined by microplate BCA method
Purity:	> 80% as determined by SDS-PAGE and Coomassie blue staining
Buffer:	25 mM Tris-HCl, 100 mM glycine, pH 7.3, 10% glycerol
Preparation:	Recombinant protein was captured through anti-DDK affinity column followed by conventional chromatography steps.
Note:	For testing in cell culture applications, please filter before use. Note that you may experience some loss of protein during the filtration process.
Storage:	Store at -80°C.
Stability:	Stable for 12 months from the date of receipt of the product under proper storage and handling conditions. Avoid repeated freeze-thaw cycles.



[View online »](#)

RefSeq: [NP_008921](#)

Locus ID: 10163

UniProt ID: [Q9Y6W5](#)

RefSeq Size: 4270

Cytogenetics: 1p36.11

RefSeq ORF: 1494

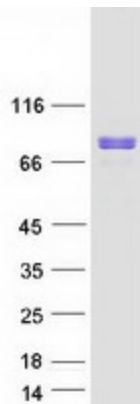
Synonyms: [dJ393P12.2](#); [IMD2](#); [SCAR2](#); [WASF4](#); [WAVE2](#)

Summary: This gene encodes a member of the Wiskott-Aldrich syndrome protein family. The gene product is a protein that forms a multiprotein complex that links receptor kinases and actin. Binding to actin occurs through a C-terminal verprolin homology domain in all family members. The multiprotein complex serves to transduce signals that involve changes in cell shape, motility or function. The published map location (PMID:10381382) has been changed based on recent genomic sequence comparisons, which indicate that the expressed gene is located on chromosome 1, and a pseudogene may be located on chromosome X. Two transcript variants encoding different isoforms have been found for this gene. [provided by RefSeq, Jan 2011]

Protein Families: Druggable Genome

Protein Pathways: Adherens junction, Fc gamma R-mediated phagocytosis, Regulation of actin cytoskeleton

Product images:



Coomassie blue staining of purified WASF2 protein (Cat# [TP308034]). The protein was produced from HEK293T cells transfected with WASF2 cDNA clone (Cat# [RC208034]) using MegaTran 2.0 (Cat# [TT210002]).