

## Product datasheet for **TP308031L**

### SMC6L1 (SMC6) (NM\_024624) Human Recombinant Protein

#### Product data:

Product Type:	Recombinant Proteins
Description:	Recombinant protein of human structural maintenance of chromosomes 6 (SMC6), transcript variant 2, 1 mg
Species:	Human
Expression Host:	HEK293T
Expression cDNA Clone or AA Sequence:	>RC208031 protein sequence <b>Red</b> =Cloning site <b>Green</b> =Tags(s)

MAKRKEENFSSPKNAKRPRQEELEDFDKDGDDECKGTTLTAAEVGIIESIHLKNFMCHSMLGPFKFGSN  
VNFVVGNNNGSGKSAVLTALIVGLGGRAVATNRGSSLKGFVKDQNSADISITLRNRGDDAFKASVYGNSI  
LIQQHISIDGSRSYKLSATGSVSTRKEELIAILDHFNIQVDNPVSVLTQEMSKQFLQSKNEGDYKFF  
MKATQLEQMKEDESYIMETKERTKEQIHQGEERLTTELKRQCVEKEERFQSIAGLSTMKTNLESLKHEMAW  
AVVNEIEKQLNAIRDNIKIGEDRAARLDRKMEEQQVRLNEAEQKYKDIQDKLEKISEETNARAPECMALK  
ADVAKKRAYNEAEVLYNRSLNEYKALKKKDDEQLCKRIEELKKSTDQSLEPERLERQKKISWLKERVKAF  
QNQENSVNQEIEQFQQAIEKDKEEHGKIKREELDVKHALSYNQRQLKELKDSKTDRLKRFGNVPALLEA  
IDDAYRQGHFTYKPVGPLGACIHLRDPALALAIESCLKGLLQAYCCHNHADERVLQALMKRFYLPGTSRP  
PIIWFSEFRNEIYDVRHRAAYHPDFPTVLTALIDNAVANSIDMRGIETVLLIKNNSVARAVMQSQKPP  
KNCREAFTADGDQVFAGRYSSENTRPFKLSRDVDSEISDLENEVENKTAQILNLQQHLSALEKDIIKHNE  
ELLKRCQLHYKELKMKIRKNISEIRELENIIEHQSVDIATLEDEAQENKSKMKMVEEHMEQQKENMEHLK  
SLKIEAENKYDAIKFKINQLSELADPLKDELNLADSEVDNQKRGKRHYEEKQKEHLDTLNKKKRELDMKE  
KELEEKMSQARQICPERIEVEKSASILDKEINRLRQKIQAESHASHGDREEIMRQYQEARITYLDLDSKVR  
TLKKFIKLLGEIMEHRFKTYQQFRRCLTLRCKLYFDNLLSQRAYCGKMNFDHKNETLSISVQPGEGNKA  
FNDMRALSGGERSFSTVCFILSLWSIAESPFRCLDEFDVMYMDMVNRRIAMDLILKMADSQRFRQFILLTP  
QSMSSLPSSKLIRILRMSDPERGQTTLPRPVTQEEDDDQR

**TRTRPLEQKLISEEDLAANDILDYKDDDDKV**

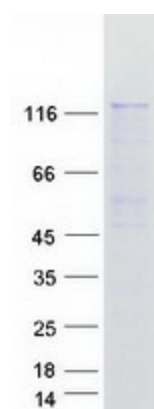
Tag:	C-Myc/DDK
Predicted MW:	126.1 kDa
Concentration:	>0.05 µg/µL as determined by microplate BCA method
Purity:	> 80% as determined by SDS-PAGE and Coomassie blue staining
Buffer:	25 mM Tris-HCl, 100 mM glycine, pH 7.3, 10% glycerol



[View online »](#)

<b>Preparation:</b>	Recombinant protein was captured through anti-DDK affinity column followed by conventional chromatography steps.
<b>Note:</b>	For testing in cell culture applications, please filter before use. Note that you may experience some loss of protein during the filtration process.
<b>Storage:</b>	Store at -80°C.
<b>Stability:</b>	Stable for 12 months from the date of receipt of the product under proper storage and handling conditions. Avoid repeated freeze-thaw cycles.
<b>RefSeq:</b>	<a href="#">NP_078900</a>
<b>Locus ID:</b>	79677
<b>UniProt ID:</b>	<a href="#">Q96SB8</a> , <a href="#">A0A2S1ZR87</a>
<b>RefSeq Size:</b>	5188
<b>Cytogenetics:</b>	2p24.2
<b>RefSeq ORF:</b>	3273
<b>Synonyms:</b>	hSMC6; SMC-6; SMC6L1
<b>Summary:</b>	Core component of the SMC5-SMC6 complex, a complex involved in DNA double-strand breaks by homologous recombination. The complex may promote sister chromatid homologous recombination by recruiting the SMC1-SMC3 cohesin complex to double-strand breaks. The complex is required for telomere maintenance via recombination in ALT (alternative lengthening of telomeres) cell lines and mediates sumoylation of shelterin complex (telosome) components which is proposed to lead to shelterin complex disassembly in ALT-associated PML bodies (APBs). Required for recruitment of telomeres to PML nuclear bodies. SMC5-SMC6 complex may prevent transcription of episomal DNA, such as circular viral DNA genome (PubMed:26983541).[UniProtKB/Swiss-Prot Function]

### Product images:



Coomassie blue staining of purified SMC6 protein (Cat# [TP308031]). The protein was produced from HEK293T cells transfected with SMC6 cDNA clone (Cat# [RC208031]) using MegaTran 2.0 (Cat# [TT210002]).