

## Product datasheet for **TP308010**

### REM (REM1) (NM\_014012) Human Recombinant Protein

#### Product data:

Product Type:	Recombinant Proteins
Description:	Recombinant protein of human RAS (RAD and GEM)-like GTP-binding 1 (REM1), 20 µg
Species:	Human
Expression Host:	HEK293T
Expression cDNA Clone or AA Sequence:	>RC208010 protein sequence <b>Red</b> =Cloning site <b>Green</b> =Tags(s)
	<p>MTLNTEQEAKTPLHRRASTPLPLSPRGHQPGRLSTVPSTQSQHPRLGQSASLNPPPTQKPSAPDDWSES SDSEGSWEALYRVLLGDPGVGKTSLSLFAGKQERDLHEQLGEDVYERTLTVDGEDTTLVVVDTWAEK LDKWSQESCLQGGSAYVIVYSIADRGSFESASELRIQLRRTHQADHVPILVGNKADLARCREVSVEEG RACAVVFDCKFIETSATLQHNVAELFEGVVRQLRLRRRDSAAKEPPAPRRPASLAQRARRFLARLTARSA RRRALKARSKSCHNLAVL</p> <p><b>TR</b>TRPLEQKLISEEDLAANDILDYKDDDDKV</p>
Tag:	C-Myc/DDK
Predicted MW:	32.8 kDa
Concentration:	>0.05 µg/µL as determined by microplate BCA method
Purity:	> 80% as determined by SDS-PAGE and Coomassie blue staining
Buffer:	25 mM Tris-HCl, 100 mM glycine, pH 7.3, 10% glycerol
Preparation:	Recombinant protein was captured through anti-DDK affinity column followed by conventional chromatography steps.
Note:	For testing in cell culture applications, please filter before use. Note that you may experience some loss of protein during the filtration process.
Storage:	Store at -80°C.
Stability:	Stable for 12 months from the date of receipt of the product under proper storage and handling conditions. Avoid repeated freeze-thaw cycles.
RefSeq:	<u><a href="#">NP_054731</a></u>
Locus ID:	28954



[View online »](#)

UniProt ID: [O75628](#)

RefSeq Size: 1689

Cytogenetics: 20q11.21

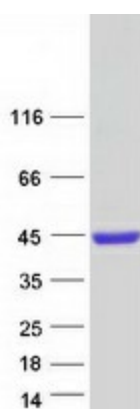
RefSeq ORF: 894

Synonyms: GD:REM; GES

**Summary:** The protein encoded by this gene is a GTPase and member of the RAS-like GTP-binding protein family. The encoded protein is expressed in endothelial cells, where it promotes reorganization of the actin cytoskeleton and morphological changes in the cells. [provided by RefSeq, Jul 2008]

**Protein Families:** Druggable Genome

## Product images:



Coomassie blue staining of purified REM1 protein (Cat# TP308010). The protein was produced from HEK293T cells transfected with REM1 cDNA clone (Cat# [RC208010]) using MegaTran 2.0 (Cat# [TT210002]).