

## Product datasheet for **TP307977M**

### UBC3B (UBE2R2) (NM\_017811) Human Recombinant Protein

#### Product data:

**Product Type:** Recombinant Proteins

**Description:** Recombinant protein of human ubiquitin-conjugating enzyme E2R 2 (UBE2R2), 100 µg

**Species:** Human

**Expression Host:** HEK293T

**Expression cDNA Clone or AA Sequence:** >RC207977 representing NM\_017811

**Red**=Cloning site **Green**=Tags(s)

MAQQQMTSSQKALMLELKSLQEEPVEGFRITLVDESPLYNWEVAIFGPPNTLYEGGYFKAHIKFPIDYPY  
SPPTFRFLTKMWHPNYENGDVCSILHPPVDDPQSGELPSERWNPTQNVRTILLSVISLLNEPNTFSPA  
NVDASVMFRKWRDSKGDKEYAEIIRKQVSATKAEAEKDGKVPPTTLAEYCIKTKVPSNDNSSDLLYDDL  
YDDIDDEDEEEEDADCYDDDDSGNEES

**TR**TRPLEQKLISEEDLAANDILDYKDDDDKV

**Tag:** C-Myc/DDK

**Predicted MW:** 27 kDa

**Concentration:** >0.05 µg/µL as determined by microplate BCA method

**Purity:** > 80% as determined by SDS-PAGE and Coomassie blue staining

**Buffer:** 25 mM Tris-HCl, 100 mM glycine, pH 7.3, 10% glycerol

**Preparation:** Recombinant protein was captured through anti-DDK affinity column followed by conventional chromatography steps.

**Note:** For testing in cell culture applications, please filter before use. Note that you may experience some loss of protein during the filtration process.

**Storage:** Store at -80°C.

**Stability:** Stable for 12 months from the date of receipt of the product under proper storage and handling conditions. Avoid repeated freeze-thaw cycles.

**RefSeq:** [NP\\_060281](#)

**Locus ID:** 54926

**UniProt ID:** [Q712K3](#)



[View online »](#)

RefSeq Size: 4457

Cytogenetics: 9p13.3

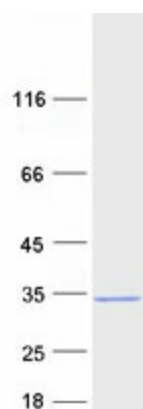
RefSeq ORF: 714

Synonyms: CDC34B; E2-CDC34B; UBC3B

**Summary:** Protein kinase CK2 is a ubiquitous and pleiotropic Ser/Thr protein kinase involved in cell growth and transformation. This gene encodes a protein similar to the E2 ubiquitin conjugating enzyme UBC3/CDC34. Studies suggest that CK2-dependent phosphorylation of this ubiquitin-conjugating enzyme functions by regulating beta-TrCP substrate recognition and induces its interaction with beta-TrCP, enhancing beta-catenin degradation. [provided by RefSeq, Jul 2008]

**Protein Pathways:** Ubiquitin mediated proteolysis

### Product images:



Coomassie blue staining of purified UBE2R2 protein (Cat# [TP307977]). The protein was produced from HEK293T cells transfected with UBE2R2 cDNA clone (Cat# [RC207977]) using MegaTran 2.0 (Cat# [TT210002]).