

Product datasheet for TP307977L

UBC3B (UBE2R2) (NM_017811) Human Recombinant Protein

Product data:

Product Type:	Recombinant Proteins
Description:	Recombinant protein of human ubiquitin-conjugating enzyme E2R 2 (UBE2R2), 1 mg
Species:	Human
Expression Host:	HEK293T
Expression cDNA Clone or AA Sequence:	>RC207977 representing NM_017811 Red=Cloning site Green=Tags(s)

MAQQQMTSSQKALMLELKSLQEEPVEGFRITLVEESDLYNWEVAIFGPPNTLYEGGYFKAHIKFPIDYPY
SPPTFRFLTKMWHPNYENGDVCSILHPPVDDPQSGELPSERWNPTQNVRTILLSVISLLNEPNTFSPA
NVDASVMFRKWRDSKGDKEYAEIIRKQVSATKAEAEKDGVKVPTTLAEYCIKTKVPSNDNSSDLLYDDL
YDDIDDEDEEEEDADCYDDDDSGNEES

TRTRPLEQKLISEEDLAANDILDYKDDDDKV

Tag:	C-Myc/DDK
Predicted MW:	27 kDa
Concentration:	>0.05 µg/µL as determined by microplate BCA method
Purity:	> 80% as determined by SDS-PAGE and Coomassie blue staining
Buffer:	25 mM Tris-HCl, 100 mM glycine, pH 7.3, 10% glycerol
Preparation:	Recombinant protein was captured through anti-DDK affinity column followed by conventional chromatography steps.
Note:	For testing in cell culture applications, please filter before use. Note that you may experience some loss of protein during the filtration process.
Storage:	Store at -80°C.
Stability:	Stable for 12 months from the date of receipt of the product under proper storage and handling conditions. Avoid repeated freeze-thaw cycles.
RefSeq:	NP_060281
Locus ID:	54926
UniProt ID:	Q712K3



[View online »](#)

RefSeq Size: 4457

Cytogenetics: 9p13.3

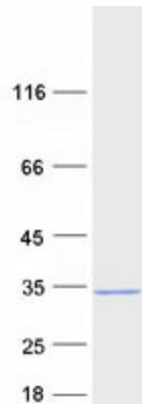
RefSeq ORF: 714

Synonyms: CDC34B; E2-CDC34B; UBC3B

Summary: Protein kinase CK2 is a ubiquitous and pleiotropic Ser/Thr protein kinase involved in cell growth and transformation. This gene encodes a protein similar to the E2 ubiquitin conjugating enzyme UBC3/CDC34. Studies suggest that CK2-dependent phosphorylation of this ubiquitin-conjugating enzyme functions by regulating beta-TrCP substrate recognition and induces its interaction with beta-TrCP, enhancing beta-catenin degradation. [provided by RefSeq, Jul 2008]

Protein Pathways: Ubiquitin mediated proteolysis

Product images:



Coomassie blue staining of purified UBE2R2 protein (Cat# [TP307977]). The protein was produced from HEK293T cells transfected with UBE2R2 cDNA clone (Cat# [RC207977]) using MegaTran 2.0 (Cat# [TT210002]).