

Product datasheet for TP307968M

MARCHF3 (NM_178450) Human Recombinant Protein

Product data:

Product Type:	Recombinant Proteins
Description:	Recombinant protein of human membrane-associated ring finger (C3HC4) 3 (MARCH3), 100 µg
Species:	Human
Expression Host:	HEK293T
Expression cDNA Clone or AA Sequence:	>RC207968 representing NM_178450 Red=Cloning site Green=Tags(s)

MTSRCSHLPEVLPDCTSSAAPVVKTVEDCGSLVNGQPQYVMQVSAKDGQLLSTVVRTLATQSPFNDRPM
CRICHEGSSQEDLLSPCECTGTLGTIHRSCLEHWLSSNTSYCELCHFRFAVERKPRPLVEWLRNPGPQH
EKRTLFGDMVCFLFITPLATISGWLCLRGAVDHLHFSSRLEAVGLIALTVALFTIYLFWTLVFSFRYHCRL
YNEWRRTNQRVILLIPKSVNVPSNQPSLLGLHSVKRNSKETVV

TRTRPLEQKLISEEDLAANDILDYKDDDDKV

Tag:	C-Myc/DDK
Predicted MW:	28.3 kDa
Concentration:	>0.05 µg/µL as determined by microplate BCA method
Purity:	> 80% as determined by SDS-PAGE and Coomassie blue staining
Buffer:	25 mM Tris-HCl, 100 mM glycine, pH 7.3, 10% glycerol
Preparation:	Recombinant protein was captured through anti-DDK affinity column followed by conventional chromatography steps.
Note:	For testing in cell culture applications, please filter before use. Note that you may experience some loss of protein during the filtration process.
Storage:	Store at -80°C.
Stability:	Stable for 12 months from the date of receipt of the product under proper storage and handling conditions. Avoid repeated freeze-thaw cycles.
RefSeq:	NP_848545
Locus ID:	115123
UniProt ID:	Q86UD3



[View online »](#)

RefSeq Size: 1816

Cytogenetics: 5q23.2

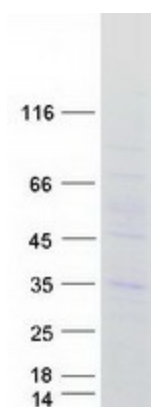
RefSeq ORF: 759

Synonyms: MARCH-III; MARCH3; RNF173

Summary: This gene encodes a member of the membrane-associated RING-CH (MARCH) family. The encoded protein is an E3 ubiquitin-protein ligase that may be involved in regulation of the endosomal transport pathway. [provided by RefSeq, Mar 2013]

Protein Families: Druggable Genome, Transmembrane

Product images:



Coomassie blue staining of purified MARCH3 protein (Cat# [TP307968]). The protein was produced from HEK293T cells transfected with MARCH3 cDNA clone (Cat# [RC207968]) using MegaTran 2.0 (Cat# [TT210002]).