

## Product datasheet for TP307961M

### RIPX (RUFY3) (NM\_014961) Human Recombinant Protein

#### Product data:

Product Type:	Recombinant Proteins
Description:	Recombinant protein of human RUN and FYVE domain containing 3 (RUFY3), transcript variant 2, 100 µg
Species:	Human
Expression Host:	HEK293T
Expression cDNA Clone or AA Sequence:	>RC207961 protein sequence Red=Cloning site Green=Tags(s)

MSALTPPTDMPTPTTDKITQAAMETIYLCKFRVSMGDGEWLCLREDDISLTPDPEPTHEDPNYLMANERM  
NLMNMAKLSIKGLIESALNLGRTLDSYAPLQQFFVMEHCLKHGLKAKKTFGLGQNKSFWGPPELVEKLV  
PEAAEITASVKDLPGLKTPVGRGRAWLRLALMQLKSEYMKALINKKELLSEFYEPNALMMEEGAIAG  
LLVGLNVIDANFCMKGEDLDSQVGVIDFSMYLKDGNSSKGTEDGGQITAILDQKNYVEELNRHLNATVNN  
LQAKVDALEKSNTKLTTELAVANNRIITLQEEMERVKEESSYILESNRKGPKQDRTAEGQALSEARKHLK  
EETQLRLDVEKELEMQISMRQEMELAMKMLEKDVCEKQDALVSLRQLDDLRLKHELAFKLQSSDLGVK  
QKSELNSRLEEKTNQMAATIKQLEQSEKDLVKQAKTLNSAANKLIPKHH

TRTRPLEQKLISEEDLAANDILDYKDDDDKV

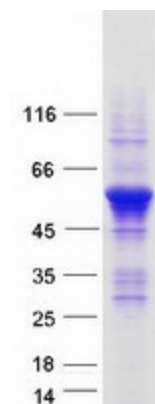
Tag:	C-Myc/DDK
Predicted MW:	52.8 kDa
Concentration:	>0.05 µg/µL as determined by microplate BCA method
Purity:	> 80% as determined by SDS-PAGE and Coomassie blue staining
Buffer:	25 mM Tris-HCl, 100 mM glycine, pH 7.3, 10% glycerol
Preparation:	Recombinant protein was captured through anti-DDK affinity column followed by conventional chromatography steps.
Note:	For testing in cell culture applications, please filter before use. Note that you may experience some loss of protein during the filtration process.
Storage:	Store at -80°C.
Stability:	Stable for 12 months from the date of receipt of the product under proper storage and handling conditions. Avoid repeated freeze-thaw cycles.



[View online >](#)

RefSeq:	<a href="#">NP_055776</a>
Locus ID:	22902
UniProt ID:	<a href="#">Q7L099</a> , <a href="#">B4DKC2</a> , <a href="#">B4DG59</a>
RefSeq Size:	4419
Cytogenetics:	4q13.3
RefSeq ORF:	1407
Synonyms:	RIPX; SINGAR1; ZFYVE30
Summary:	This gene encodes a RPIP8, UNC-14, and NESCA domain-containing protein that is required for maintenance of neuronal polarity. In addition, it has been implicated in mediation of gastric cancer cell migration and invasion via interaction with P21-activated kinase-1, which promotes its expression. The encoded protein localizes to F-actin-enriched invadopodia to induce formation of protrusions, thereby facilitating cell migration. Alternative splicing results in multiple transcript variants. [provided by RefSeq, Sep 2016]

### Product images:



Coomassie blue staining of purified RUFY3 protein (Cat# [TP307961]). The protein was produced from HEK293T cells transfected with RUFY3 cDNA clone (Cat# [RC207961]) using MegaTran 2.0 (Cat# [TT210002]).