

Product datasheet for TP307944M

DTX3L (NM_138287) Human Recombinant Protein

Product data:

Product Type:	Recombinant Proteins
Description:	Recombinant protein of human deltex 3-like (Drosophila) (DTX3L), 100 µg
Species:	Human
Expression Host:	HEK293T
Expression cDNA Clone or AA Sequence:	>RC207944 protein sequence Red=Cloning site Green=Tags(s)

MASHLRPPSPLLVRVYKSGPRVRRKLESYFQSSKSSGGGECTVSTQEHEAPGTFRVEFSERA AKERVLKK
GEHQILVDEKPVPIFLVPTENSIIKKNTRPQISSLTQSQAETPSGDMHQHEGHIPNAVDSCLQKIFLTVTA
DLN CNLFSKEQRAYITTLCP S IRKMEGHDGIEKVC GDFQDIERIHQFLSEQFLESEKQKQFSPSMT ERKP
LSQQERDSCISPSEPETKAEQKS NYFEVPLPYFEYFKYICPDKINSIEKRFVNIIEIQESSNMVCLDFT
SSRSGDLEAARESFASEFQKNTEPLKQECVSLADSKQANKFKQELNHQFTKLLIKEKGGELTLLGTQDDI
SAAKQKISEAFVKIPVKLFAANYMMNVIEVDSAHYKLLLETLLQEISEIEKRYDICKSVSEKQKTCILF
ESKDRQVDLSVHAYASFIDAFQHASCQLMREVL LKSLGKERKHLHQTKFADDFRKRHPNVHFV LNQESM
TLTGLPNHLAKAKQYVLKGGGMSSLAGK LKEGHETPMDIDSDDSKAASPPLKGSVSSEASELDKKEKGI
CVICMDTISNKKVLPKCKHEFCAPCINKAMSYK PICPTCQTSYGIQKGNQPEGSMVFTVSRDSLPGYESF
GTIVITYSMKAGIQTEHPNPGKRYPGIQR TAYLPDNKEGRKVLKLLYRAFDQKLI FTVGYSRVLGVSDV
ITWNDIHHKTSRFGGPEMYGYPDPSYLKRVKEELKAKGIE

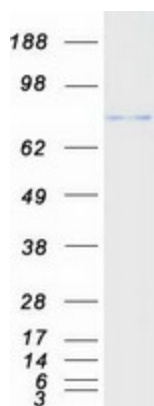
TRTRPLEQKLISEEDLAANDILDYKDDDDKV

Tag:	C-Myc/DDK
Predicted MW:	83.4 kDa
Concentration:	>0.05 µg/µL as determined by microplate BCA method
Purity:	> 80% as determined by SDS-PAGE and Coomassie blue staining
Buffer:	25 mM Tris-HCl, 100 mM glycine, pH 7.3, 10% glycerol
Preparation:	Recombinant protein was captured through anti-DDK affinity column followed by conventional chromatography steps.
Note:	For testing in cell culture applications, please filter before use. Note that you may experience some loss of protein during the filtration process.
Storage:	Store at -80°C.



[View online »](#)

Stability:	Stable for 12 months from the date of receipt of the product under proper storage and handling conditions. Avoid repeated freeze-thaw cycles.
RefSeq:	NP_612144
Locus ID:	151636
UniProt ID:	Q8TDB6
RefSeq Size:	5768
Cytogenetics:	3q21.1
RefSeq ORF:	2220
Synonyms:	BBAP; RNF143
Summary:	DTX3L functions as an E3 ubiquitin ligase (Takeyama et al., 2003 [PubMed 12670957]). [supplied by OMIM, Nov 2009]
Protein Families:	Druggable Genome
Protein Pathways:	Notch signaling pathway

Product images:

Coomassie blue staining of purified DTX3L protein (Cat# [TP307944]). The protein was produced from HEK293T cells transfected with DTX3L cDNA clone (Cat# [RC207944]) using MegaTran 2.0 (Cat# [TT210002]).