

Product datasheet for **TP307936L**

APLF (NM_173545) Human Recombinant Protein

Product data:

Product Type: Recombinant Proteins

Description: Recombinant protein of human aprataxin and PNKP like factor (APLF), 1 mg

Species: Human

Expression Host: HEK293T

Expression cDNA Clone or AA Sequence: >RC207936 protein sequence

Red=Cloning site **Green**=Tags(s)

MSGGFELQPRDGGPRVALAPGETVIGRGPLLGITDKRVSRRHAILEVAGGQLRIKPIHTNPCFYQSSEKS
QLLPLKPNLWCYLNPGDSFSLVDKYIFRILSIPSEVEMQCTLRNSQVLDEDNILNETPKSPVINLPHET
TGASQLEGSTEIAKTQMTPTNSVSFLGENRDCNKQQPILAERKRILPTWMLAEHLSDQNLVPAISGGNV
IQGSGKEEICKDKSQLNTTQQGRRQLISSGSENTSAEQDTGEECKNTDQEESTISSKEMPQSFSAITLS
NTEMNNIKTNAQRNKLPIEELGKVSKHKIATKRTPHKEDEAMSCSENCSSAQGDSLQDESQGSHESSSN
PSNPETLHAKATDSVLQGSEGNKVKRTSCMYGANCYRKNPVHFQHFHSHPGSDSDYGGVQIVGQDETDDRPE
CPYGPSCYRKNPQHKEIYRHNTLPVRNVLDEDNDNVGQPNEYDLNDSFLDDEEEDYEPTDEDSWEPGKE
DEEKEDVEELLKEAKRFMKRK

TRTRPLEQKLISEEDLAANDILDYKDDDDKV

Tag: C-Myc/DDK

Predicted MW: 56.8 kDa

Concentration: >0.05 µg/µL as determined by microplate BCA method

Purity: > 80% as determined by SDS-PAGE and Coomassie blue staining

Buffer: 25 mM Tris-HCl, 100 mM glycine, pH 7.3, 10% glycerol

Preparation: Recombinant protein was captured through anti-DDK affinity column followed by conventional chromatography steps.

Note: For testing in cell culture applications, please filter before use. Note that you may experience some loss of protein during the filtration process.

Storage: Store at -80°C.

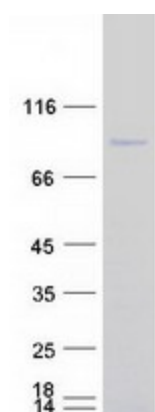
Stability: Stable for 12 months from the date of receipt of the product under proper storage and handling conditions. Avoid repeated freeze-thaw cycles.



[View online >](#)

RefSeq:	NP_775816
Locus ID:	200558
UniProt ID:	Q8IW19
RefSeq Size:	3869
Cytogenetics:	2p13.3
RefSeq ORF:	1533
Synonyms:	APFL; C2orf13; PALF; Xip1; ZCCHH1
Summary:	C2ORF13 is a component of the cellular response to chromosomal DNA single- and double-strand breaks (Iles et al., 2007 [PubMed 17353262]).[supplied by OMIM, Mar 2008]

Product images:



Coomassie blue staining of purified APLF protein (Cat# [TP307936]). The protein was produced from HEK293T cells transfected with APLF cDNA clone (Cat# [RC207936]) using MegaTran 2.0 (Cat# [TT210002]).