

## Product datasheet for **TP307932M**

### IGJ (JCHAIN) (NM\_144646) Human Recombinant Protein

#### Product data:

Product Type:	Recombinant Proteins
Description:	Recombinant protein of human immunoglobulin J polypeptide, linker protein for immunoglobulin alpha and mu polypeptides (IGJ), 100 µg
Species:	Human
Expression Host:	HEK293T
Expression cDNA Clone or AA Sequence:	>RC207932 protein sequence <b>Red</b> =Cloning site <b>Green</b> =Tags(s)
	 MKNHLLFWGVLAVFIKAVHVKAQEDERIVLVDNKCKCARITSRIIRSSDPNEDIVERNIRIIVPLNNRE NISDPTSPLRTRFVYHLSDLCKKCDPTEVELDNQIVTATQSNICDEDSATETCYTYDRNKCYTAVVPLVY GGETKMMVETALTPDACYPD  <b>TRTRPLEQKLISEEDLAANDILDYKDDDDKV</b>
Tag:	C-Myc/DDK
Predicted MW:	17.9 kDa
Concentration:	>0.05 µg/µL as determined by microplate BCA method
Purity:	> 80% as determined by SDS-PAGE and Coomassie blue staining
Buffer:	25 mM Tris-HCl, 100 mM glycine, pH 7.3, 10% glycerol
Preparation:	Recombinant protein was captured through anti-DDK affinity column followed by conventional chromatography steps.
Note:	For testing in cell culture applications, please filter before use. Note that you may experience some loss of protein during the filtration process.
Storage:	Store at -80°C.
Stability:	Stable for 12 months from the date of receipt of the product under proper storage and handling conditions. Avoid repeated freeze-thaw cycles.
RefSeq:	<a href="#">NP_653247</a>
Locus ID:	3512
UniProt ID:	<a href="#">P01591</a>



[View online »](#)

RefSeq Size: 1413

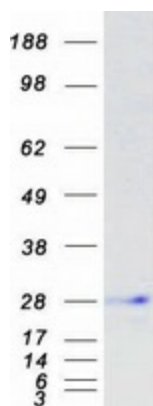
Cytogenetics: 4q13.3

RefSeq ORF: 477

Synonyms: IGCJ; IGJ; JCH

**Summary:** Serves to link two monomer units of either IgM or IgA. In the case of IgM, the J chain-joined dimer is a nucleating unit for the IgM pentamer, and in the case of IgA it induces larger polymers. It also help to bind these immunoglobulins to secretory component.  
[UniProtKB/Swiss-Prot Function]

### Product images:



Coomassie blue staining of purified JCHAIN protein (Cat# [TP307932]). The protein was produced from HEK293T cells transfected with JCHAIN cDNA clone (Cat# [RC207932]) using MegaTran 2.0 (Cat# [TT210002]).