

Product datasheet for **TP307932L**

IGJ (JCHAIN) (NM_144646) Human Recombinant Protein

Product data:

Product Type: Recombinant Proteins

Description: Recombinant protein of human immunoglobulin J polypeptide, linker protein for immunoglobulin alpha and mu polypeptides (IGJ), 1 mg

Species: Human

Expression Host: HEK293T

Expression cDNA Clone or AA Sequence: >RC207932 protein sequence
Red=Cloning site **Green**=Tags(s)

MKNHLLFWGVLAVFIKAVHVKAQEDERIVLVDNKCKCARITSRIIRSSDPNEDIVERNIRIIVPLNNRE
NISDPTSPLRTRFVYHLSDLCKKCDPTEVELDNQIVTATQSNICDEDSATETCYTYDRNKCYTAVVPLVY
GGETKMMVETALTPDACYPD

TRTRPLEQKLISEEDLAANDILDYKDDDDKV

Tag: C-Myc/DDK

Predicted MW: 17.9 kDa

Concentration: >0.05 µg/µL as determined by microplate BCA method

Purity: > 80% as determined by SDS-PAGE and Coomassie blue staining

Buffer: 25 mM Tris-HCl, 100 mM glycine, pH 7.3, 10% glycerol

Preparation: Recombinant protein was captured through anti-DDK affinity column followed by conventional chromatography steps.

Note: For testing in cell culture applications, please filter before use. Note that you may experience some loss of protein during the filtration process.

Storage: Store at -80°C.

Stability: Stable for 12 months from the date of receipt of the product under proper storage and handling conditions. Avoid repeated freeze-thaw cycles.

RefSeq: [NP_653247](#)

Locus ID: 3512

UniProt ID: [P01591](#)



[View online »](#)

RefSeq Size: 1413

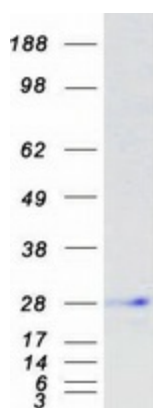
Cytogenetics: 4q13.3

RefSeq ORF: 477

Synonyms: IGCJ; IGJ; JCH

Summary: Serves to link two monomer units of either IgM or IgA. In the case of IgM, the J chain-joined dimer is a nucleating unit for the IgM pentamer, and in the case of IgA it induces larger polymers. It also help to bind these immunoglobulins to secretory component.
[UniProtKB/Swiss-Prot Function]

Product images:



Coomassie blue staining of purified JCHAIN protein (Cat# [TP307932]). The protein was produced from HEK293T cells transfected with JCHAIN cDNA clone (Cat# [RC207932]) using MegaTran 2.0 (Cat# [TT210002]).