

## Product datasheet for **TP307913L**

### MD1 (LY86) (NM\_004271) Human Recombinant Protein

#### Product data:

**Product Type:** Recombinant Proteins

**Description:** Recombinant protein of human lymphocyte antigen 86 (LY86), 1 mg

**Species:** Human

**Expression Host:** HEK293T

**Expression cDNA Clone  
or AA Sequence:** >RC207913 protein sequence  
**Red**=Cloning site **Green**=Tags(s)

MKGFTATLFLWTLIFPSCSGGGGKAWPTHVWCSDSGLEVLYQSCDPLQDFGFSVEKCSKQLKSNINIRF  
GIILREDIKELFLDLALMSQGSSVLNFSYPICEAALPKFSFCGRRKGEQIYYAGPVNPNPEFTIPQGEYQV  
LLELYTEKRSTVACANATIMCS

**TRTRPLEQKLISEEDLAANDILDYKDDDDKV**

**Tag:** C-Myc/DDK

**Predicted MW:** 17.7 kDa

**Concentration:** >0.05 µg/µL as determined by microplate BCA method

**Purity:** > 80% as determined by SDS-PAGE and Coomassie blue staining

**Buffer:** 25 mM Tris-HCl, 100 mM glycine, pH 7.3, 10% glycerol

**Preparation:** Recombinant protein was captured through anti-DDK affinity column followed by conventional chromatography steps.

**Note:** For testing in cell culture applications, please filter before use. Note that you may experience some loss of protein during the filtration process.

**Storage:** Store at -80°C.

**Stability:** Stable for 12 months from the date of receipt of the product under proper storage and handling conditions. Avoid repeated freeze-thaw cycles.

**RefSeq:** [NP\\_004262](#)

**Locus ID:** 9450

**UniProt ID:** [O95711](#)

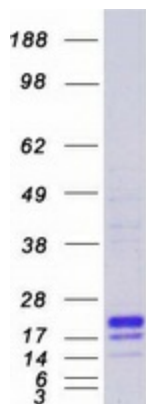
**RefSeq Size:** 895



[View online »](#)

Cytogenetics:	6p25.1
RefSeq ORF:	486
Synonyms:	dj80N2.1; MD-1; MD1; MMD-1
Summary:	May cooperate with CD180 and TLR4 to mediate the innate immune response to bacterial lipopolysaccharide (LPS) and cytokine production. Important for efficient CD180 cell surface expression (By similarity).[UniProtKB/Swiss-Prot Function]
Protein Families:	Secreted Protein

### Product images:



Coomassie blue staining of purified LY86 protein (Cat# [TP307913]). The protein was produced from HEK293T cells transfected with LY86 cDNA clone (Cat# [RC207913]) using MegaTran 2.0 (Cat# [TT210002]).