

## Product datasheet for **TP307909L**

### Glypican 5 (GPC5) (NM\_004466) Human Recombinant Protein

#### Product data:

Product Type:	Recombinant Proteins
Description:	Recombinant protein of human glypican 5 (GPC5), 1 mg
Species:	Human
Expression Host:	HEK293T
Expression cDNA	>RC207909 protein sequence
Clone or AA Sequence:	Red=Cloning site Green=Tags(s)

MDAQTWPVGFRCLLLLLALVGSARSEGVQTCEEVRKLFQWRLLGAVRGLPDSPRAGPDLQVCISKKPTCCT  
RKMEERYQIAARQDMQQFLQTSSTLKFILSRNAAAFQETLETLIKQAENYTSILFCSTYRNMALEAAAS  
VQEFFTDVGLYLFADVNPEEFVNRFFDSLFLVYNHLINPGVTDSSLEYSECIRMARRDVSPFGNIPQR  
VMGQMGRSLLPSRTFLQALNLGIEVINTTDYLHFSKECSRALLKMQYCPHCQGLALTKPCMGCYCLNVMRG  
CLAHMAELNPHWHAYIRSLEELSDAMHGTYDIGHVLLNFHLLVNDAVLQAHLNGQKLEQVNRICGRPVR  
TPTQSPRCSEFDQSKEKHGMKTTTRNSEETLANRRKEFINSRLYRSFYGGGLADQLCANELAAADGLPCWN  
GEDIVKSYTQRVVGNGIKAQSGNPEVKVKGIDPVINQIIDKLKHVVQLLQGRSPKPKDWELLQLGSGGGM  
VEQVSGDCDEDEGCGGSGSGEVKRTLKIDWMPDDMNFSDVKQIHQTDGTSTLDTTGAGCAVATESMTFT  
LISVVMLLPGIW

TRTRPLEQKLISEEDLAANDILDYKDDDDKV

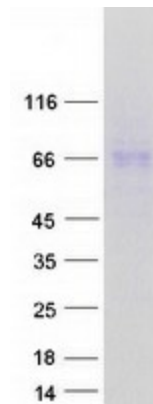
Tag:	C-Myc/DDK
Predicted MW:	63.5 kDa
Concentration:	>0.05 µg/µL as determined by microplate BCA method
Purity:	> 80% as determined by SDS-PAGE and Coomassie blue staining
Buffer:	25 mM Tris-HCl, 100 mM glycine, pH 7.3, 10% glycerol
Preparation:	Recombinant protein was captured through anti-DDK affinity column followed by conventional chromatography steps.
Note:	For testing in cell culture applications, please filter before use. Note that you may experience some loss of protein during the filtration process.
Storage:	Store at -80°C.



[View online »](#)

<b>Stability:</b>	Stable for 12 months from the date of receipt of the product under proper storage and handling conditions. Avoid repeated freeze-thaw cycles.
<b>RefSeq:</b>	<a href="#">NP_004457</a>
<b>Locus ID:</b>	2262
<b>UniProt ID:</b>	<a href="#">P78333</a>
<b>RefSeq Size:</b>	2966
<b>Cytogenetics:</b>	13q31.3
<b>RefSeq ORF:</b>	1716
<b>Summary:</b>	Cell surface heparan sulfate proteoglycans are composed of a membrane-associated protein core substituted with a variable number of heparan sulfate chains. Members of the glypican-related integral membrane proteoglycan family (GRIPS) contain a core protein anchored to the cytoplasmic membrane via a glycosyl phosphatidylinositol linkage. These proteins may play a role in the control of cell division and growth regulation. [provided by RefSeq, Jul 2008]

### Product images:



Coomassie blue staining of purified GPC5 protein (Cat# [TP307909]). The protein was produced from HEK293T cells transfected with GPC5 cDNA clone (Cat# [RC207909]) using MegaTran 2.0 (Cat# [TT210002]).