

## Product datasheet for **TP307902M**

### **TBX21 (NM\_013351) Human Recombinant Protein**

#### Product data:

**Product Type:** Recombinant Proteins  
**Description:** Recombinant protein of human T-box 21 (TBX21), 100 µg  
**Species:** Human  
**Expression Host:** HEK293T  
**Expression cDNA Clone or AA Sequence:** >RC207902 representing NM\_013351  
**Red**=Cloning site **Green**=Tags(s)

MGIVEPGCGDMLTGTEPMPGSDEGRAPGADPQHRYFYPEPGAQDADERRGGGSLGSPYPGGALVPAPP  
SR  
FLGAYAYPPRPQAAGFPGAGESFPPPADAEGYQPGEGYAAPDPRAGLYPGREDYALPAGLEVSGKLRVA  
LNNHLLWSKFNQHQTEMIITKQRRMFPLSFTVAGLEPTSHYRMFVDVVLVDQHHWRYQSGKWWQC  
GKA  
EGSMPGNRLVHPDSPNTGAHWMRQEVSGKLLTNNKGASNNVTQMIVLQSLHKYQPR LHIVEVND  
GEP  
EAACNASNTHIFTFQETQFIAVTAYQNAEITQLKIDNNPFAKGFRENFESMYTSVDTSIPSPPGNCQFL  
GGDHYSPLLPNQYPVPSRFYPLDLPGQAKDVVPQAYWLGAPRDHSYEAEFRAVSMKPAFLPSAPGPTMSY  
Y  
RGQEV LAPGAGWPVAPQYPPKMGPASWFRPMRTLPMEPGPGGSEGRGPEDQGPPLVWTEIAPIRPES  
DS  
GLGEGDSKRRRVSPYPSSGDSSSPAGAPSPFDKEAEGQFYNYFPN

**TRTRPLEQKLISEEDLAANDILDYKDDDDKV**

**Tag:** C-Myc/DDK  
**Predicted MW:** 58.1 kDa  
**Concentration:** >0.05 µg/µL as determined by microplate BCA method  
**Purity:** > 80% as determined by SDS-PAGE and Coomassie blue staining  
**Buffer:** 25 mM Tris-HCl, 100 mM glycine, pH 7.3, 10% glycerol  
**Bioactivity:** Enzyme substrate (PMID: [30054205](https://pubmed.ncbi.nlm.nih.gov/30054205/))  
**Preparation:** Recombinant protein was captured through anti-DDK affinity column followed by conventional chromatography steps.



[View online >](#)

**Note:** For testing in cell culture applications, please filter before use. Note that you may experience some loss of protein during the filtration process.

**Storage:** Store at -80°C.

**Stability:** Stable for 12 months from the date of receipt of the product under proper storage and handling conditions. Avoid repeated freeze-thaw cycles.

**RefSeq:** [NP\\_037483](#)

**Locus ID:** 30009

**UniProt ID:** [Q9UL17](#)

**RefSeq Size:** 2589

**Cytogenetics:** 17q21.32

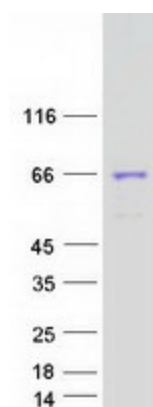
**RefSeq ORF:** 1605

**Synonyms:** T-bet; T-PET; TBET; TBLYM

**Summary:** This gene is a member of a phylogenetically conserved family of genes that share a common DNA-binding domain, the T-box. T-box genes encode transcription factors involved in the regulation of developmental processes. This gene is the human ortholog of mouse Tbx21/Tbet gene. Studies in mouse show that Tbx21 protein is a Th1 cell-specific transcription factor that controls the expression of the hallmark Th1 cytokine, interferon-gamma (IFNG). Expression of the human ortholog also correlates with IFNG expression in Th1 and natural killer cells, suggesting a role for this gene in initiating Th1 lineage development from naive Th precursor cells. [provided by RefSeq, Jul 2008]

**Protein Families:** Druggable Genome, Transcription Factors

### Product images:



Coomassie blue staining of purified TBX21 protein (Cat# [TP307902]). The protein was produced from HEK293T cells transfected with TBX21 cDNA clone (Cat# [RC207902]) using MegaTran 2.0 (Cat# [TT210002]).