

Product datasheet for **TP307902L**

TBX21 (NM_013351) Human Recombinant Protein

Product data:

| | |
|------------------------------|---|
| Product Type: | Recombinant Proteins |
| Description: | Recombinant protein of human T-box 21 (TBX21) |
| Species: | Human |
| Expression Host: | HEK293T |
| Expression cDNA | >RC207902 representing NM_013351 |
| Clone or AA Sequence: | Red=Cloning site Green=Tags(s) |

MGIVEPGCGDMLTGTEPMPGSDEGRAPGADPQHRYFYPEPGAQDADERRGGGSLGSPYPGGALVPAPPSR
FLGAYAYPPRQAAGFPGAGESFPPADAEGYQPGEGYAAPDPRAGLYPGPREDYALPAGLEVSGKLRVA
LNNHLLWSKFNQHQTEMIITKQGRRMFPLSFTVAGLEPTSHYRMFVDVVLVDQHHWRYQSGKWWQCCKA
EGSMPGNRLYVHPDSPNTGAHWMRQEVSGKLLTNNKGASNNVTQMIVLQSLHKYQRLHIVEVNDGEP
EAACNASNTHIFTFQETQFIAVTAYQNAEITQLKIDNPNFAKGFRENFESMYTSVDTSIPSPGPNCQFL
GGDHYSPLLPNQYPVPSRFYDLPGQAKDVVPQAYWLGAPRDHSYEAEFRAVSMKPAFLPSAPGPTMSYY
RGQEV LAPGAGWPVAPQYPPKMGPASWFRPMRTLPMEPGGGSEGRGPEDQGPPLVWTEIAPIRPESSDS
GLGEGDSKRRRVSPYPSSGDSSSPAGAPSPFDKEAEGQFYNYFPN

TRTRPLEQKLISEEDLAANDILDYKDDDDKV

| | |
|-----------------------|--|
| Tag: | C-Myc/DDK |
| Predicted MW: | 58.1 kDa |
| Concentration: | >50 ug/mL as determined by microplate BCA method |
| Purity: | > 80% as determined by SDS-PAGE and Coomassie blue staining |
| Buffer: | 25 mM Tris.HCl, pH 7.3, 100 mM glycine, 10% glycerol |
| Bioactivity: | Enzyme substrate (PMID: 30054205) |
| Preparation: | Recombinant protein was captured through anti-DDK affinity column followed by conventional chromatography steps. |
| Applications: | Cell culture: For culture applications, please filter before use. Note that you may experience some loss of protein during the filtration process. |
| Storage: | Store at -80°C. |



[View online »](#)

Stability: Stable for 12 months from the date of receipt of the product under proper storage and handling conditions. Avoid repeated freeze-thaw cycles.

RefSeq: [NP_037483](#)

Locus ID: 30009

UniProt ID: [Q9UL17](#)

RefSeq Size: 2589

Cytogenetics: 17q21.32

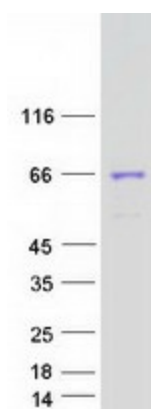
RefSeq ORF: 1605

Synonyms: T-bet; T-PET; TBET; TBLYM

Summary: This gene is a member of a phylogenetically conserved family of genes that share a common DNA-binding domain, the T-box. T-box genes encode transcription factors involved in the regulation of developmental processes. This gene is the human ortholog of mouse Tbx21/Tbet gene. Studies in mouse show that Tbx21 protein is a Th1 cell-specific transcription factor that controls the expression of the hallmark Th1 cytokine, interferon-gamma (IFNG). Expression of the human ortholog also correlates with IFNG expression in Th1 and natural killer cells, suggesting a role for this gene in initiating Th1 lineage development from naive Th precursor cells. [provided by RefSeq, Jul 2008]

Protein Families: Druggable Genome, Transcription Factors

Product images:



Coomassie blue staining of purified TBX21 protein (Cat# [TP307902]). The protein was produced from HEK293T cells transfected with TBX21 cDNA clone (Cat# [RC207902]) using MegaTran 2.0 (Cat# [TT210002]).