

## Product datasheet for **TP307901**

### PFD6 (PFDN6) (NM\_014260) Human Recombinant Protein

#### Product data:

Product Type:	Recombinant Proteins
Description:	Recombinant protein of human prefoldin subunit 6 (PFDN6), 20 µg
Species:	Human
Expression Host:	HEK293T
Expression cDNA Clone or AA Sequence:	>RC207901 protein sequence <b>Red</b> =Cloning site <b>Green</b> =Tags(s)
	MAELIQKKLQGEVEKYQQLQKDLKSKMSGRQKLEAQLTENNIVKEELALLDGSNVVFKLLGPVLVKQELG EARATVGRKRLDYITAEIKRYESQLRDLERQSEQQRETLAQLQEFQRAQAAGAPGKA
	<b>TRTRPLEQKLISEEDLAANDILDYKDDDDKV</b>
Tag:	C-Myc/DDK
Predicted MW:	14.4 kDa
Concentration:	>0.05 µg/µL as determined by microplate BCA method
Purity:	> 80% as determined by SDS-PAGE and Coomassie blue staining
Buffer:	25 mM Tris-HCl, 100 mM glycine, pH 7.3, 10% glycerol
Preparation:	Recombinant protein was captured through anti-DDK affinity column followed by conventional chromatography steps.
Note:	For testing in cell culture applications, please filter before use. Note that you may experience some loss of protein during the filtration process.
Storage:	Store at -80°C.
Stability:	Stable for 12 months from the date of receipt of the product under proper storage and handling conditions. Avoid repeated freeze-thaw cycles.
RefSeq:	<a href="#">NP_055075</a>
Locus ID:	10471
UniProt ID:	<a href="#">Q15212</a> , <a href="#">Q5STK2</a>
RefSeq Size:	602
Cytogenetics:	6p21.32



[View online »](#)

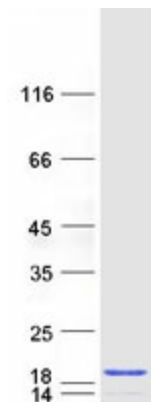
RefSeq ORF: 387

Synonyms: H2-KE2; HKE2; KE-2; PFD6

Summary: PFDN6 is a subunit of the heteromeric prefoldin complex that chaperones nascent actin (see MIM 102560) and alpha- and beta-tubulin (see MIM 602529 and MIM 191130, respectively) chains pending their transfer to the cytosolic chaperonin containing TCP1 (MIM 186980) (CCT) complex (Hansen et al., 1999 [PubMed 10209023]).[supplied by OMIM, Jul 2010]

Protein Families: Stem cell - Pluripotency

### Product images:



Coomassie blue staining of purified PFDN6 protein (Cat# TP307901). The protein was produced from HEK293T cells transfected with PFDN6 cDNA clone (Cat# [RC207901]) using MegaTran 2.0 (Cat# [TT210002]).