

Product datasheet for **TP307898M**

TOB2 (NM_016272) Human Recombinant Protein

Product data:

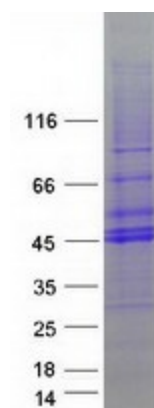
Product Type:	Recombinant Proteins
Description:	Purified recombinant protein of Homo sapiens transducer of ERBB2, 2 (TOB2), 100 µg
Species:	Human
Expression Host:	HEK293T
Expression cDNA Clone or AA Sequence:	>RC207898 protein sequence Red =Cloning site Green =Tags(s)
	<p>MQLEIKVALNFIISYLYNKLPRRRADLFGHEELRLKKKYEGHWYPEKPLKGSFRCVHIGEMVDPVVEL AAKRSLAVEDVRANVPEELSVWIDPFVSYQIGEKGAVKVLVYLDLDDSEGCGAPELDKEIKSSFNPDAQVF VPIGSQDSSLSNSPSPSFGQSPSPTFIPRSAQPITFTTASFAATKFGSTKMKKGGGAASGGGVASSGAGG QQPPQQPRMARSPTNSLLKHKLSLSMHSLSNFITANPAPQSQLSPNAKEFVYNGGGSPSLFFDAADGQGS GTPGPFGGSGAGTCNSSSFDMAQVFGGGANSLFLEKTPFVEGLSYNLNTMQYPSQQFQPVVLAN</p> <p>TRTRPLEQLISEEDLAANDILDYKDDDDKV</p>
Tag:	C-Myc/DDK
Predicted MW:	36.5 kDa
Concentration:	>0.05 µg/µL as determined by microplate BCA method
Purity:	> 80% as determined by SDS-PAGE and Coomassie blue staining
Buffer:	25 mM Tris-HCl, 100 mM glycine, pH 7.3, 10% glycerol
Preparation:	Recombinant protein was captured through anti-DDK affinity column followed by conventional chromatography steps.
Note:	For testing in cell culture applications, please filter before use. Note that you may experience some loss of protein during the filtration process.
Storage:	Store at -80°C.
Stability:	Stable for 12 months from the date of receipt of the product under proper storage and handling conditions. Avoid repeated freeze-thaw cycles.
RefSeq:	<u>NP_057356</u>
Locus ID:	10766



[View online »](#)

UniProt ID:	Q14106
RefSeq Size:	4575
Cytogenetics:	22q13.2
RefSeq ORF:	1032
Synonyms:	APRO5; TOB4; TOBL; TROB2
Summary:	TOB2 belongs to the TOB (see TOB1; MIM 605523)/BTG1 (MIM 109580) family of antiproliferative proteins, which are involved in the regulation of cell cycle progression. [supplied by OMIM, Apr 2004]

Product images:



Coomassie blue staining of purified TOB2 protein (Cat# [TP307898]). The protein was produced from HEK293T cells transfected with TOB2 cDNA clone (Cat# [RC207898]) using MegaTran 2.0 (Cat# [TT210002]).