

Product datasheet for **TP307895**

Adducin 2 (ADD2) (NM_017488) Human Recombinant Protein

Product data:

Product Type: Recombinant Proteins

Description: Recombinant protein of human adducin 2 (beta) (ADD2), transcript variant beta-4, 20 µg

Species: Human

Expression Host: HEK293T

Expression cDNA Clone >RC207895 representing NM_017488

or AA Sequence: **Red**=Cloning site **Green**=Tags(s)

MSEETVPEAASPPPPQGQPYFDRFSEDDPEYMRLRNRAADLRQDFNLMEQKKRVTMILQSPSFREELEGL
IQEQMKKGNNSSNIWALRQIADFMASHTSHAVFPTSSMNVSMMPINDLHTADSLNLAKGERLMRCKISSV
YRLLDLYGWAQLSDTYVTLRVSKEQDHFLISPKGVSCSEVTASSLIKVNILGEVVEKGSFCFVDDTTGFC
LHSAIYAARPDVRCIIHLHTPATAAVSAMKWGLLPVSHNALLVGDMAFYDFNGEMEQAADRINLQKCLGP
TCKILVLRNHGVALGDTVEEAFYKIFHLQAACEIQVSALSSAGGVENLILLEQEKHRPHEVGSVQWAGS
TFGPMQKSRLGEHEFEALMRMLDNLGYRTGYTYRHPFVQEKTKHKSEVEIPATVTAFFVEEDGAPVPALR
QHAQKQQKEKTRWLNTPNNTYLVRNVADEVQRSMGSPRPKTTWMKADEVEKSSSGMPIRIENPNQFVPLYT
DPQEVLEMRNKIREQNRQDVKSAGPQSLLASVIAEKSRSPSTESQLMSKGDDEDTKDDSEETVNPFSQL
TDQELEEYKKEVERKKLEDETQGEREPGSGPAVCEFFSVALHIWSNILERKKLPQKSLAHLQSLHLLLQ
CRAQRRRQRQAL

TRTRPLEQKLISEEDLAANDILDYKDDDDKV

Tag: C-Myc/DDK

Predicted MW: 72.5 kDa

Concentration: >0.05 µg/µL as determined by microplate BCA method

Purity: > 80% as determined by SDS-PAGE and Coomassie blue staining

Buffer: 25 mM Tris-HCl, 100 mM glycine, pH 7.3, 10% glycerol

Preparation: Recombinant protein was captured through anti-DDK affinity column followed by conventional chromatography steps.

Note: For testing in cell culture applications, please filter before use. Note that you may experience some loss of protein during the filtration process.

Storage: Store at -80°C.



[View online »](#)

Stability: Stable for 12 months from the date of receipt of the product under proper storage and handling conditions. Avoid repeated freeze-thaw cycles.

RefSeq: [NP_059522](#)

Locus ID: 119

UniProt ID: [P35612](#)

RefSeq Size: 4043

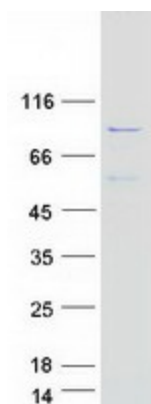
Cytogenetics: 2p13.3

RefSeq ORF: 1929

Synonyms: ADDB

Summary: Adducins are heteromeric proteins composed of different subunits referred to as adducin alpha, beta and gamma. The three subunits are encoded by distinct genes and belong to a family of membrane skeletal proteins involved in the assembly of spectrin-actin network in erythrocytes and at sites of cell-cell contact in epithelial tissues. While adducins alpha and gamma are ubiquitously expressed, the expression of adducin beta is restricted to brain and hematopoietic tissues. Adducin, originally purified from human erythrocytes, was found to be a heterodimer of adducins alpha and beta. Polymorphisms resulting in amino acid substitutions in these two subunits have been associated with the regulation of blood pressure in an animal model of hypertension. Heterodimers consisting of alpha and gamma subunits have also been described. Structurally, each subunit is comprised of two distinct domains. The amino-terminal region is protease resistant and globular in shape, while the carboxy-terminal region is protease sensitive. The latter contains multiple phosphorylation sites for protein kinase C, the binding site for calmodulin, and is required for association with spectrin and actin. Alternatively spliced transcript variants have been described. [provided by RefSeq, Jun 2010]

Product images:



Coomassie blue staining of purified ADD2 protein (Cat# TP307895). The protein was produced from HEK293T cells transfected with ADD2 cDNA clone (Cat# [RC207895]) using MegaTran 2.0 (Cat# [TT210002]).