

Product datasheet for **TP307891**

SDF1 (CXCL12) (NM_199168) Human Recombinant Protein

Product data:

Product Type:	Recombinant Proteins
Description:	Purified recombinant protein of human chemokine (C-X-C motif) ligand 12 (stromal cell-derived factor 1) (CXCL12), transcript variant 1, with C-terminal MYC/DDK tag, secretory expressed in HEK293 cells, 20 µg
Species:	Human
Expression Host:	HEK293T
Expression cDNA Clone or AA Sequence:	Recombinant protein was produced with TrueORF clone, RC207891.
Tag:	C-Myc/DDK
Predicted MW:	9.9 kDa
Concentration:	>0.05 µg/µL as determined by microplate BCA method
Purity:	> 80% as determined by SDS-PAGE and Coomassie blue staining
Buffer:	25 mM Tris-HCl, 100 mM glycine, pH 7.3, 10% glycerol
Bioactivity:	Cell treatment (PMID: 29436696)
Preparation:	Recombinant protein was captured through anti-DDK affinity column followed by conventional chromatography steps.
Note:	For testing in cell culture applications, please filter before use. Note that you may experience some loss of protein during the filtration process.
Storage:	Store at -80°C.
Stability:	Stable for 12 months from the date of receipt of the product under proper storage and handling conditions. Avoid repeated freeze-thaw cycles.
RefSeq:	NP_954637
Locus ID:	6387
UniProt ID:	P48061
RefSeq Size:	1937
Cytogenetics:	10q11.21
RefSeq ORF:	267



[View online »](#)

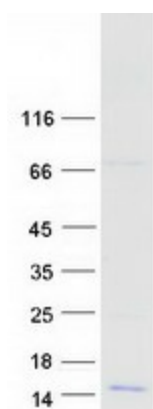
Synonyms: IRH; PBSF; SCYB12; SDF1; TLSF; TPAR1

Summary: This antimicrobial gene encodes a stromal cell-derived alpha chemokine member of the intercrine family. The encoded protein functions as the ligand for the G-protein coupled receptor, chemokine (C-X-C motif) receptor 4, and plays a role in many diverse cellular functions, including embryogenesis, immune surveillance, inflammation response, tissue homeostasis, and tumor growth and metastasis. Mutations in this gene are associated with resistance to human immunodeficiency virus type 1 infections. Multiple transcript variants encoding different isoforms have been found for this gene. [provided by RefSeq, Sep 2014]

Protein Families: Druggable Genome, ES Cell Differentiation/IPS, Secreted Protein

Protein Pathways: Axon guidance, Chemokine signaling pathway, Cytokine-cytokine receptor interaction, Leukocyte transendothelial migration

Product images:



Coomassie blue staining of purified CXCL12 protein (Cat# TP307891). The protein was produced from HEK293T cells transfected with CXCL12 cDNA clone (Cat# [RC207891]) using MegaTran 2.0 (Cat# [TT210002]).